

## Product datasheet for **AP06421PU-M**

### VASP Rabbit Polyclonal Antibody

#### Product data:

Product Type:	Primary Antibodies
Applications:	IHC, WB
Recommended Dilution:	<b>Western blot:</b> 1/500-1/1000. <b>Immunohistochemistry on paraffin sections:</b> 1/50-1/200.
Reactivity:	Human, Mouse, Rat
Host:	Rabbit
Clonality:	Polyclonal
Immunogen:	Synthetic peptide, corresponding to amino acids 130-180 of Human VASP.
Specificity:	This antibody detects endogenous levels of VASP protein. (region surrounding His150)
Formulation:	Phosphate buffered saline (PBS), pH 7.2. State: Aff - Purified State: Liquid purified Ig fraction Preservative: 15 mM sodium azide
Concentration:	1.0 mg/ml
Purification:	Affinity-chromatography using epitope-specific immunogen and the purity is > 95% (by SDS-PAGE)
Conjugation:	Unconjugated
Storage:	Store undiluted at 2-8°C for one month or (in aliquots) at -20°C for longer. Avoid repeated freezing and thawing.
Stability:	Shelf life: one year from despatch.
Predicted Protein Size:	~ 48 kDa
Gene Name:	vasodilator-stimulated phosphoprotein
Database Link:	<a href="#">Entrez Gene 7408 Human P50552</a>



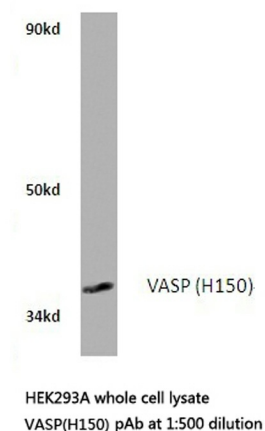
[View online »](#)

**Background:**

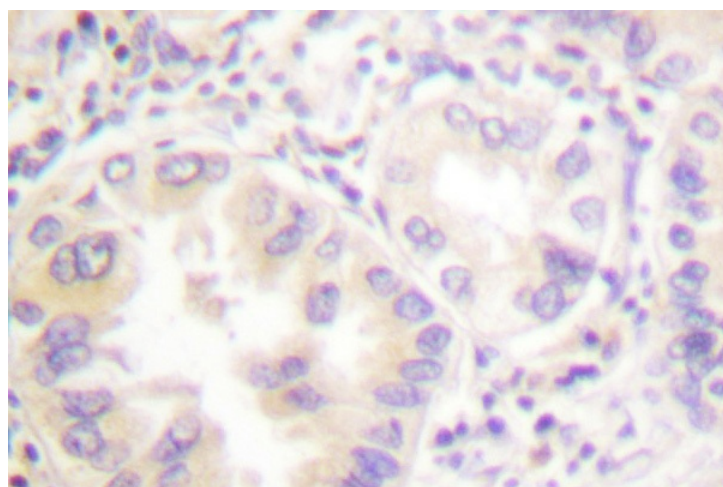
VASP (vasodilator-stimulated phosphoprotein), is involved in the maintenance of cytoarchitecture by interacting with actin-like filaments. VASP shares a limited degree of homology with the amino terminus of WASP, which is frequently mutated in WAS patients. An established substrate of cAMP and cGMP dependent kinases, VASP is phosphorylated on a regulatory serine residue 157 and localizes to focal adhesions, microfilaments and highly active regions of the plasma membrane. VASP is a protein of between 46 and 50 kDa that is highly expressed in human platelets and, like WASP, may play a role in cytoskeletal organization.

**Synonyms:**

Vasodilator-stimulated phosphoprotein

**Product images:**


Western blot (WB) analysis of VASP antibody in extracts from HEK293A cells.



Immunohistochemistry (IHC) analyzes of VASP antibody in paraffin-embedded human lung carcinoma tissue.