

Product datasheet for **AP06417PU-M**

gamma Synuclein (SNCG) Rabbit Polyclonal Antibody

Product data:

Product Type:	Primary Antibodies
Applications:	IHC, WB
Recommended Dilution:	Western blot: 1/500-1/1000. Immunohistochemistry on paraffin sections: 1/50-1/200.
Reactivity:	Human
Host:	Rabbit
Clonality:	Polyclonal
Immunogen:	Synthetic peptide, corresponding to amino acids 81-130 of Human Synoretin.
Specificity:	This antibody detects endogenous levels of Synuclein γ protein. (region surrounding Ala111)
Formulation:	Phosphate buffered saline (PBS), pH 7.2. State: Aff - Purified State: Liquid purified Ig fraction Preservative: 0.05% sodium azide
Concentration:	1.0 mg/ml
Purification:	Affinity-chromatography using epitope-specific immunogen and the purity is > 95% (by SDS-PAGE)
Conjugation:	Unconjugated
Storage:	Store undiluted at 2-8°C for one month or (in aliquots) at -20°C for longer. Avoid repeated freezing and thawing.
Stability:	Shelf life: one year from despatch.
Predicted Protein Size:	~ 20 kDa
Gene Name:	synuclein gamma
Database Link:	Entrez Gene 6623 Human O76070



[View online »](#)

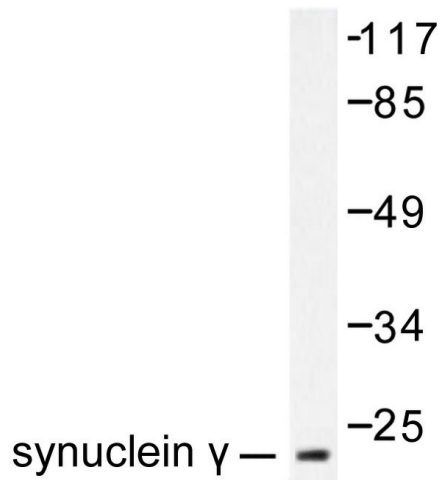
Background:

The synucleins, including alpha-synuclein (also designated NACP for nonamyloid component precursor), beta-synuclein (also designated PNP 14 for phosphoneuroprotein 14), and gamma-synuclein (also designated persyn or BCSG1 for breast cancer-specific gene 1) are presynaptic proteins abundant in neurons. alpha-Synuclein, identified as a component of Alzheimers disease amyloid plaques, is localized to neuronal cell bodies and synapses. Coordinate expression of alpha-synuclein and beta-synuclein may be important during hematopoietic cell differentiation. A mutant form of alpha-synuclein is found in patients with early onset Parkinsons disease. gamma-Synuclein is associated with axonal pathology in Parkinsons disease.

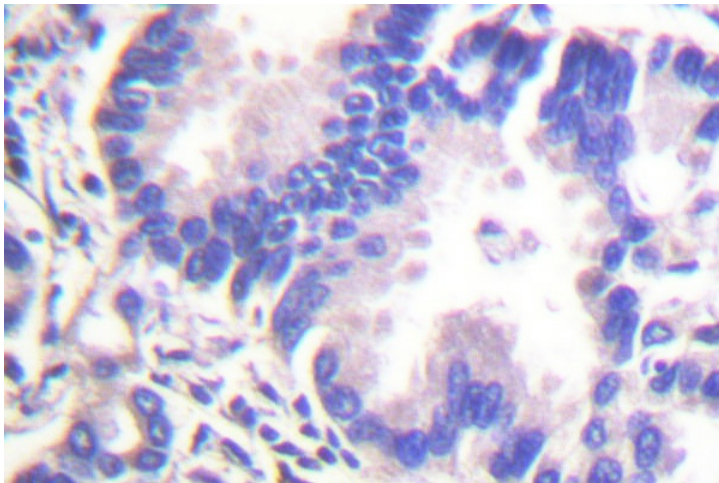
Synonyms:

PERSYN, Synuclein gamma, Synoretin, BCSG1, PRSN

Product images:



Western blot (WB) analysis of Synuclein ? antibody in extracts from HT29 cells.



Immunohistochemistry (IHC) analyzes of Synuclein ? antibody in paraffin-embedded human lung carcinoma tissue.