

## Product datasheet for **AP06415PU-N**

### STAT4 Rabbit Polyclonal Antibody

#### Product data:

Product Type:	Primary Antibodies
Applications:	IHC, WB
Recommended Dilution:	<b>Western blot:</b> 1/500-1/1000. <b>Immunohistochemistry on paraffin sections:</b> 1/50-1/200.
Reactivity:	Human, Mouse
Host:	Rabbit
Clonality:	Polyclonal
Immunogen:	Synthetic peptide, corresponding to amino acids 658-705 of Human Stat4.
Specificity:	STAT4 (E687) antibody detects endogenous levels of STAT4 protein.
Formulation:	Phosphate buffered saline (PBS), pH 7.2. State: Aff - Purified State: Liquid purified Ig fraction Preservative: 15 mM sodium azide
Concentration:	1.0 mg/ml
Purification:	Affinity-chromatography using epitope-specific immunogen and the purity is > 95% (by SDS-PAGE)
Conjugation:	Unconjugated
Storage:	Store undiluted at 2-8°C for one month or (in aliquots) at -20°C for longer. Avoid repeated freezing and thawing.
Stability:	Shelf life: one year from despatch.
Predicted Protein Size:	~ 88 kDa
Gene Name:	signal transducer and activator of transcription 4
Database Link:	<a href="#">Entrez Gene 6775 Human Q14765</a>



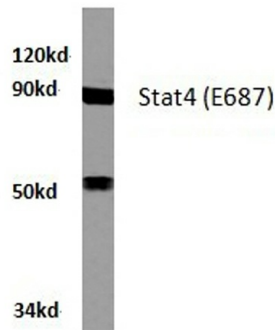
[View online »](#)

**Background:**

Membrane receptor signaling by various ligands, including interferons and growth hormones such as EGF, induces activation of Jak kinases which then leads to tyrosine phosphorylation of the various Stat transcription factors. Stat1 and Stat2 are induced by IFN- $\alpha$  and form a heterodimer which is part of the ISGF3 transcription factor complex. Although early reports indicate Stat3 activation by EGF and IL-6, it has been shown that Stat3 $\beta$  appears to be activated by both while Stat3 $\alpha$  is activated by EGF, but not by IL-6. Highest expression of Stat4 is seen in testis and myeloid cells. IL-12 has been identified as an activator of Stat4. Stat5 has been shown to be activated by prolactin and by IL-3. Stat6 is involved in IL-4 activated signaling pathways.

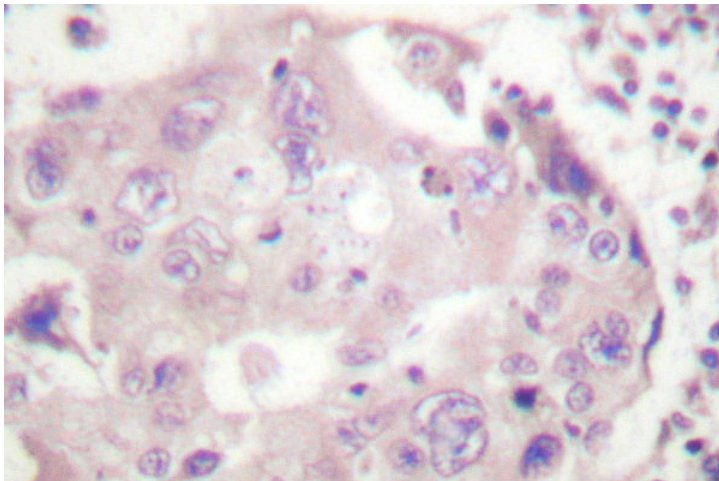
**Synonyms:**

OTTHUMP00000163553; SLEB11

**Product images:**

HeLa whole cell lysate  
Stat4(E687) pAb at 1:500 dilution

Western blot (WB) analysis of STAT4 antibody in extracts from HeLa cells.



Immunohistochemistry (IHC) analyzes of STAT4 antibody in paraffin-embedded human breast carcinoma tissue.