

Product datasheet for **AP06414PU-M**

SMAD3 Rabbit Polyclonal Antibody

Product data:

Product Type:	Primary Antibodies
Applications:	IHC, WB
Recommended Dilution:	Western blot: 1/500-1/1000. Immunohistochemistry on paraffin sections: 1/50-1/200.
Reactivity:	Human, Mouse, Rat
Host:	Rabbit
Clonality:	Polyclonal
Immunogen:	Synthetic peptide, corresponding to amino acids 385-430 of Human Smad3.
Specificity:	This antibody detects endogenous levels of Smad3 protein. (region surrounding Pro417)
Formulation:	Phosphate buffered saline (PBS), pH 7.2. State: Aff - Purified State: Liquid purified Ig fraction Preservative: 0.05% sodium azide
Concentration:	1.0 mg/ml
Purification:	Affinity-chromatography using epitope-specific immunogen and the purity is > 95% (by SDS-PAGE)
Conjugation:	Unconjugated
Storage:	Store undiluted at 2-8°C for one month or (in aliquots) at -20°C for longer. Avoid repeated freezing and thawing.
Stability:	Shelf life: one year from despatch.
Predicted Protein Size:	~ 55 kDa
Gene Name:	SMAD family member 3
Database Link:	Entrez Gene 4088 Human P84022



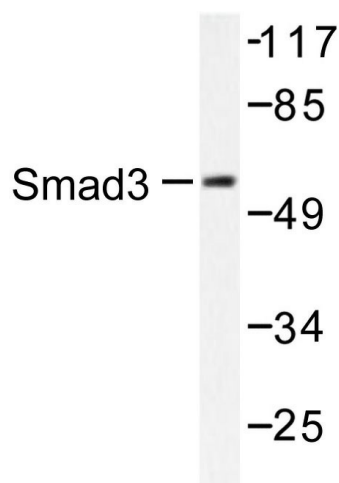
[View online »](#)

Background:

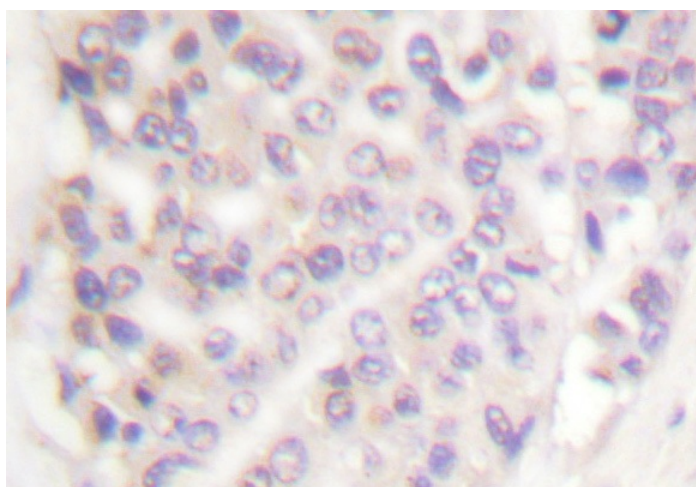
Smad proteins, the mammalian homologs of the *Drosophila* mothers against decapentaplegic (Mad), have been implicated as downstream effectors of TGF β /BMP signaling. Smad1 (also designated Madr1 or JV4-1) and Smad5 are effectors of BMP-2 and BMP-4 function, while Smad2 (also designated Madr2 or JV18-1) and Smad3 are involved in TGF β and activin-mediated growth modulation. Smad4 (also designated DPC4) has been shown to mediate all of the above activities through interaction with various Smad family members. Smad6 and Smad7 regulate the response to a ctivin/TGF β signaling by interfering with TGF β -mediated phosphorylation of other Smad proteins.

Synonyms:

SMAD family member 3, SMAD 3, SMAD-3, Mad3, MAD-3, MADH3, MAD homolog 3, JV15-2

Product images:


Western blot (WB) analysis of Smad3 antibody in extracts from 293 cells treated with UV 5'.



Immunohistochemistry (IHC) analyzes of Smad3 antibody in paraffin-embedded human breast carcinoma tissue.