

## Product datasheet for **AP06413PU-N**

### SMAD2 Rabbit Polyclonal Antibody

#### Product data:

|                         |  |
|-------------------------|--|
| Product Type:           | Primary Antibodies   |
| Applications:           | IF, IHC, WB  |
| Recommended Dilution:   | <b>Western blot:</b> 1/500-1/1000.<br><b>Immunohistochemistry on paraffin sections</b> 1/50-1/200.<br><b>Immunofluorescence:</b> 1/50-1/200. |
| Reactivity:             | Human, Mouse, Rat  |
| Host:                   | Rabbit   |
| Clonality:              | Polyclonal   |
| Immunogen:              | Synthetic peptide, corresponding to amino acids 426-476 of Human Smad2.  |
| Specificity:            | This antibody detects endogenous levels of Smad2 protein.<br>(region surrounding Pro459)   |
| Formulation:            | Phosphate buffered saline (PBS), pH 7.2.<br>State: Aff - Purified<br>State: Liquid purified Ig fraction<br>Preservative: 0.05% sodium azide  |
| Concentration:          | 1.0 mg/ml  |
| Purification:           | Affinity-chromatography using epitope-specific immunogen and the purity is > 95% (by SDS-PAGE)   |
| Conjugation:            | Unconjugated   |
| Storage:                | Store undiluted at 2-8°C for one month or (in aliquots) at -20°C for longer.<br>Avoid repeated freezing and thawing.                         |
| Stability:              | Shelf life: one year from despatch.  |
| Predicted Protein Size: | ~ 60 kDa   |
| Gene Name:              | SMAD family member 2   |
| Database Link:          | <a href="#">Entrez Gene 4087 Human Q15796</a>  |



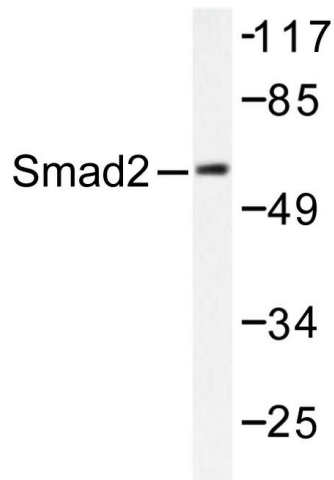
[View online »](#)

**Background:**

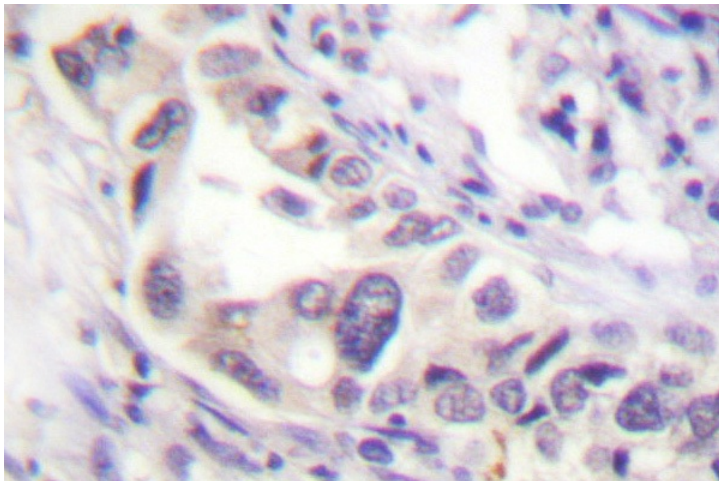
Smad proteins, the mammalian homologs of the Drosophila mothers against decapentaplegic (Mad), have been implicated as downstream effectors of  $\text{GF}\beta/\text{BMP}$  signaling. Smad1 (also designated Madr1 or JV4-1) and Smad5 are effectors of BMP-2 and BMP-4 function, while Smad2 (also designated Madr2 or JV18-1) and Smad3 are involved in  $\text{TGF}\beta$  and activin-mediated growth modulation. Smad4 (also designated DPC4) has been shown to mediate all of the above activities through interaction with various Smad family members. Smad6 and Smad7 regulate the response to activin/ $\text{TGF}\beta$  signaling by interfering with  $\text{TGF}\beta$ -mediated phosphorylation of other Smad proteins.

**Synonyms:**

SMAD family member 2, SMAD-2, SMAD 2, MADH2, MAD homolog 2, MADR2, Mad-related protein 2, JV18-1

**Product images:**

Western blot (WB) analysis of Smad2 antibody in extracts from HepG2 or K562 cells treated with UV 5'.



Immunohistochemistry (IHC) analyzes of Smad2 antibody in paraffin-embedded human prostate carcinoma lung carcinoma tissue.