

## Product datasheet for **AP06411PU-N**

### SHC (SHC1) Rabbit Polyclonal Antibody

#### Product data:

Product Type:	Primary Antibodies
Applications:	ELISA, IHC, WB
Recommended Dilution:	<b>ELISA:</b> 1/20000-1/40000. <b>Western Blot:</b> 1/500-1/1000. <b>Immunohistochemistry on Paraffin Sections:</b> 1/50-1/200.
Reactivity:	Human, Mouse, Rat
Host:	Rabbit
Clonality:	Polyclonal
Immunogen:	Synthetic peptide, corresponding to amino acids 390-440 of Human Shc.
Specificity:	This antibody detects endogenous levels of Shc protein.
Formulation:	PBS, pH~7.2 State: Aff - Purified State: Liquid purified Ig fraction (> 95% pure by SDS-PAGE) Preservative: 0.05% Sodium Azide
Concentration:	1.0 mg/ml
Purification:	Affinity-Chromatography using epitope-specific immunogen
Conjugation:	Unconjugated
Storage:	Store undiluted at 2-8°C for one month or (in aliquots) at -20°C for longer. Avoid repeated freezing and thawing.
Stability:	Shelf life: one year from despatch.
Predicted Protein Size:	~ 46, 52, 66 kDa
Gene Name:	SHC adaptor protein 1
Database Link:	<a href="#">Entrez Gene 6464 Human P29353</a>



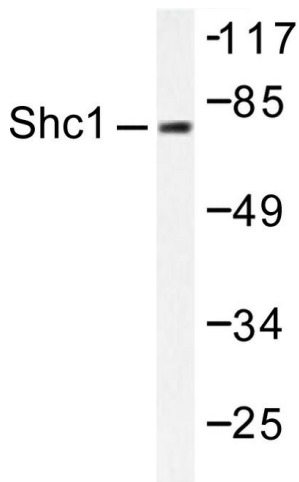
[View online »](#)

**Background:**

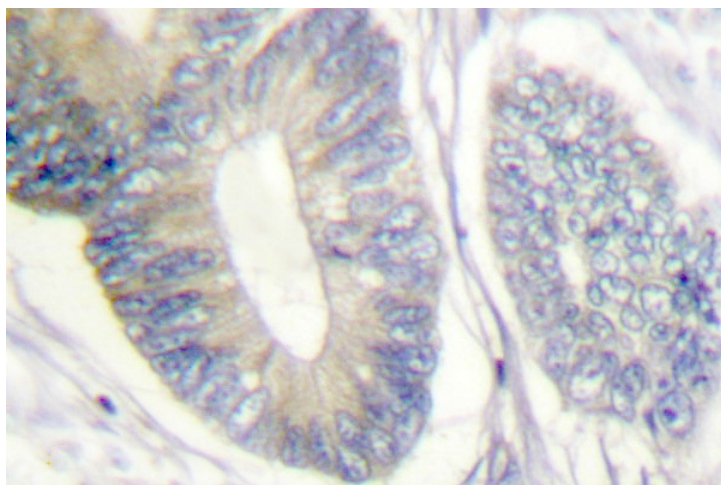
Growth factor triggering of protein tyrosine kinase receptors induces signals that cascade to the nucleus activating mitogenic, as well as other, responses. Critical components of this process include adapter proteins such as Shc and IRS-1 that lack detectable catalytic activity. These are immediate substrates of receptor tyrosine kinase activity and serve to physically link activated receptors to downstream signaling components. Whereas Shc has been implicated in signaling by diverse receptor families, IRS-1 serves primarily as the major insulin receptor substrate. Shc also participates in insulin signaling by linking the insulin receptor to Ras by forming complexes with the adapter protein GRB2 and Sos independently of IRS-1. A protein immunologically related to IRS-1, originally designated 4PS and now known as IRS-2, was shown to become highly tyrosine phosphorylated in response to IL-4 or IGF-1 in cells lacking IRS-1. An additional member of this family of signaling intermediates, Shb, is a SH2-containing protein with characteristic proline-rich domains.

**Synonyms:**

SHC-transforming protein 1, SHC-transforming protein A, SHC-transforming protein 3, SHCA

**Product images:**

Western blot (WB) analysis of Shc antibody in extracts from HeLa cells treated with Calyculin A 50nM 15' or HeLa cells treated with Calyculin A 100nM 30'.



Immunohistochemistry (IHC) analyzes of Shc antibody in paraffin-embedded human brain colon carcinoma tissue.