

Product datasheet for **AP06407PU-M**

POLR2A Rabbit Polyclonal Antibody

Product data:

Product Type:	Primary Antibodies
Applications:	ELISA, IHC, WB
Recommended Dilution:	Western blot: 1/500-1/1000. Immunofluorescence: 1/50-1/200. Immunohistochemistry on Paraffin Sections: 1/50-1/200.
Reactivity:	Human, Mouse, Rat
Host:	Rabbit
Clonality:	Polyclonal
Immunogen:	Synthetic peptide, corresponding to amino acids 1580-1630 of Human Rpb1.
Specificity:	This antibody detects endogenous levels of POLR2A protein. (region surrounding Pro1613)
Formulation:	Phosphate buffered saline (PBS), pH~7.2 State: Aff - Purified State: Liquid purified Ig fraction (> 95% pure by SDS-PAGE). Preservative: 0.05% Sodium Azide
Concentration:	1.0 mg/ml
Purification:	Affinity Chromatography using epitope-specific immunogen.
Conjugation:	Unconjugated
Storage:	Store undiluted at 2-8°C for one month or (in aliquots) at -20°C for longer. Avoid repeated freezing and thawing.
Stability:	Shelf life: one year from despatch.
Predicted Protein Size:	217,240 kDa
Gene Name:	polymerase (RNA) II subunit A
Database Link:	Entrez Gene 5430 Human P24928



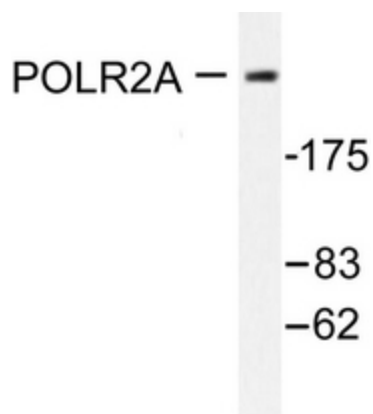
[View online »](#)

Background:

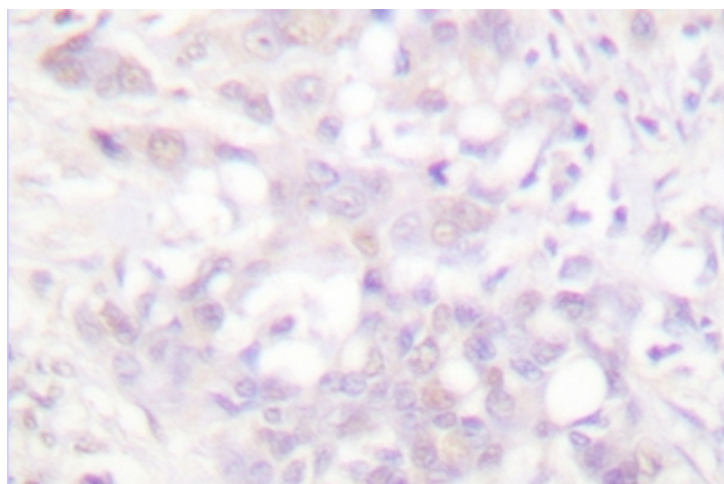
RPB1 is a subunit of RNA polymerase II which catalyses transcription of RNA from DNA. RPB1 forms the polymerase active center together with the second largest subunit. Pol II is the central component of the basal RNA polymerase II transcription machinery. It is composed of mobile elements that move relative to each other. RPB1 is part of the core element with the central large cleft, the clamp element that moves to open and close the cleft and the jaws that are thought to grab the incoming DNA template.

Synonyms:

RNA polymerase II, RNA polymerase II subunit B1, POLR2, POLRA, RPOL2, RPB1, RPB220

Product images:


Western blot analysis of POLR2A antibody in extracts from COS7 cells treated with EGF 200ng/ml 30'.



Immunohistochemistry analysis of POLR2A antibody in paraffin-embedded human breast carcinoma tissue.