

Product datasheet for **AP06406PU-M**

PLCG 2 (PLCG2) Rabbit Polyclonal Antibody

Product data:

Product Type:	Primary Antibodies
Applications:	ELISA, IHC, WB
Recommended Dilution:	Western blot: 1/500-1/1000. Immunohistochemistry on paraffin sections 1/50-1/200.
Reactivity:	Human, Mouse, Rat
Host:	Rabbit
Clonality:	Polyclonal
Immunogen:	Synthetic peptide, corresponding to amino acids 720-770 of Human PLC γ 2.
Specificity:	This antibody detects endogenous levels of PLCG2 protein. (region surrounding Arg747)
Formulation:	Phosphate buffered saline (PBS), pH~7.2 State: Aff - Purified State: Liquid purified Ig fraction (> 95% pure by SDS-PAGE) Preservative: 0.05% Sodium Azide
Concentration:	1.0 mg/ml
Purification:	Affinity Chromatography using epitope-specific immunogen
Conjugation:	Unconjugated
Storage:	Store undiluted at 2-8°C for one month or (in aliquots) at -20°C for longer. Avoid repeated freezing and thawing.
Stability:	Shelf life: One year from despatch.
Predicted Protein Size:	~ 148 kDa
Gene Name:	phospholipase C gamma 2
Database Link:	Entrez Gene 5336 Human P16885

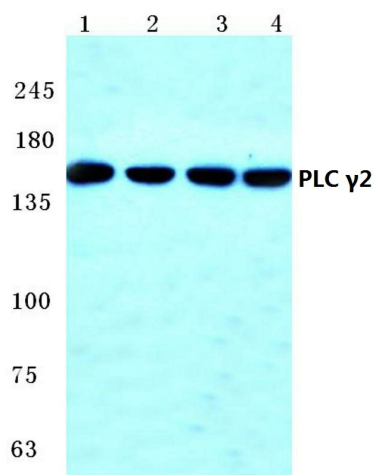
[View online »](#)

Background:

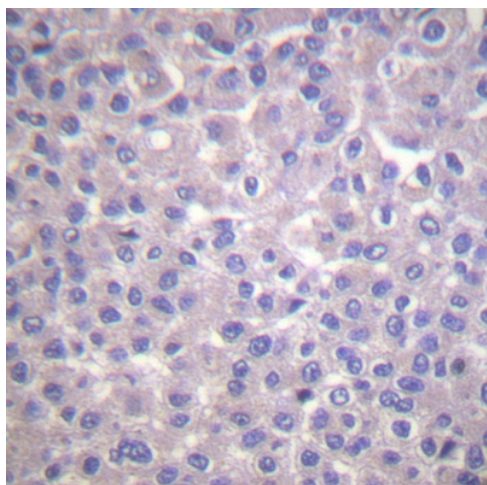
Phosphoinositide-specific phospholipase C (PLC) plays a crucial role in the initiation of receptor mediated signal transduction through the generation of the two second messengers, inositol 1,4,5-triphosphate and diacylglycerol from phosphatidylinositol 4,5-bisphosphate. There are many mammalian PLC isozymes, including PLC β 1, PLC β 2, PLC β 3, PLC β 4, PLC γ 1, PLC γ 2, PLC δ 1, PLC δ 2 and PLC ϵ . PLC δ exists as four different isoforms. PLC δ 1, a calcium signal amplifier, is activated by an atypical GTP-binding protein. In addition, PLC δ 1 is an effector for GTP-binding protein transglutaminase II-mediated oxytocin receptor and α 1B-adrenoreceptor signaling. Mouse PLC δ 1 is highly expressed in brain, heart, lung and testis. PLC δ is abnormally accumulated in autopsied brains with Alzheimer's disease (AD), suggesting that it may play a role in the pathology of AD. PLC δ 2 is markedly expressed in type II intestinal metaplasia and in the adenocarcinoma. When PLC δ 2 is expressed in type I intestinal metaplasia, the metaplasia is generally considered benign, yet evolves toward neoplastic transformation. Thus, PLC δ 2 expression may be a possible marker of gastric malignant transformation.

Synonyms:

Phospholipase C-gamma-2, PLC-gamma-2, Phospholipase C-IV, PLC-IV

Product images:


Western blot (WB) analysis of PLC γ 2 antibody at 1/500 dilution Lane 1:A549 whole cell lysate Lane 2:NIH-3T3 whole cell lysate Lane 3:Mouse brain tissue lysate Lane 4:Rat brain tissue lysate



Immunohistochemistry (IHC) analyzes of PLCG2 antibody in paraffin-embedded human breast carcinoma tissue.