

## Product datasheet for **AP06404PU-M**

### BCAR1 Rabbit Polyclonal Antibody

#### Product data:

Product Type:	Primary Antibodies
Applications:	IHC, WB
Recommended Dilution:	<b>Western blot:</b> 1/500-1/1000. <b>Immunohistochemistry on paraffin sections:</b> 1/50-1/200.
Reactivity:	Human, Mouse, Rat
Host:	Rabbit
Clonality:	Polyclonal
Immunogen:	Synthetic peptide, corresponding to amino acids 380-430 of Human p130 Cas.
Specificity:	This antibody detects endogenous levels of p130 Cas protein. (region surrounding Val404)
Formulation:	Phosphate buffered saline (PBS), pH 7.2. State: Aff - Purified State: Liquid purified Ig fraction Preservative: 0.05% sodium azide
Concentration:	1.0 mg/ml
Purification:	Affinity-chromatography using epitope-specific immunogen and the purity is > 95% (by SDS-PAGE)
Conjugation:	Unconjugated
Storage:	Store undiluted at 2-8°C for one month or (in aliquots) at -20°C for longer. Avoid repeated freezing and thawing.
Stability:	Shelf life: one year from despatch.
Predicted Protein Size:	~ 130 kDa
Gene Name:	BCAR1, Cas family scaffolding protein
Database Link:	<a href="#">Entrez Gene 9564 Human P56945</a>

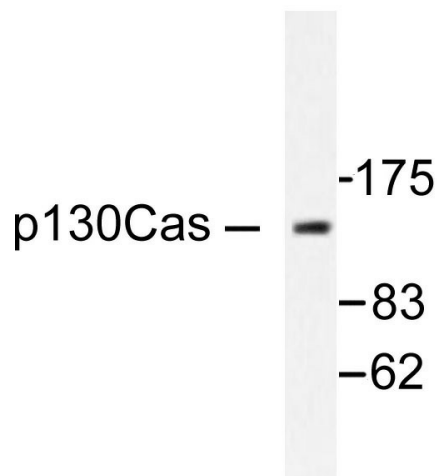
[View online »](#)

**Background:**

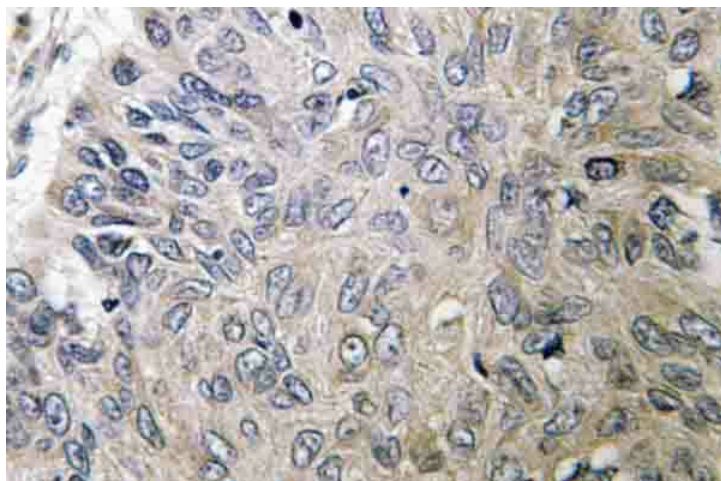
The p130Cas (Cas for Crk-associated substrate) is a common cellular target of phosphorylation signal via v-Crk and v-Src oncoproteins. p130Cas has a unique structure that contains a Src homology (SH)-3 domain followed by multiple YXXP motifs and a proline-rich region. p130Cas is implicated in a variety of biological processes including cell adhesion, cell migration, growth factor stimulation, cytokine receptor engagement and bacterial infection. Physiological functions of p130Cas include cardiovascular development, actin filament assembly and Src-induced cell transformation.

**Synonyms:**

p130cas, CASS1

**Product images:**


Western blot (WB) analysis of p130 Cas antibody in extracts from NIH/3T3 cells.



Immunohistochemistry (IHC) analysis of p130 Cas antibody in paraffin-embedded human lung carcinoma tissue.