

Product datasheet for **AP06400PU-M**

Mammaglobin A (SCGB2A2) Rabbit Polyclonal Antibody

Product data:

Product Type:	Primary Antibodies
Applications:	ELISA, IF, IHC, WB
Recommended Dilution:	Western blot: 1/500-1/1000. Immunohistochemistry on Paraffin Sections: 1/50-1/200. Immunofluorescence: 1/50-1/200.
Reactivity:	Human, Mouse, Rat
Host:	Rabbit
Clonality:	Polyclonal
Immunogen:	Synthetic peptide, corresponding to amino acids 36-86 of Human Mammaglobin A.
Specificity:	This antibody detects endogenous levels of Mammaglobin/SCGB2A2 protein. (region surrounding Phe66)
Formulation:	Phosphate buffered saline (PBS), pH~7.2 State: Aff - Purified State: Liquid purified Ig fraction (> 95% pure by SDS-PAGE) Preservative: 0.05% Sodium Azide
Concentration:	1.0 mg/ml
Purification:	Affinity Chromatography using epitope-specific immunogen
Conjugation:	Unconjugated
Storage:	Store undiluted at 2-8°C for one month or (in aliquots) at -20°C for longer. Avoid repeated freezing and thawing.
Stability:	Shelf life: one year from despatch.
Predicted Protein Size:	~20 kDa
Gene Name:	secretoglobin family 2A member 2
Database Link:	Entrez Gene 4250 Human Q13296



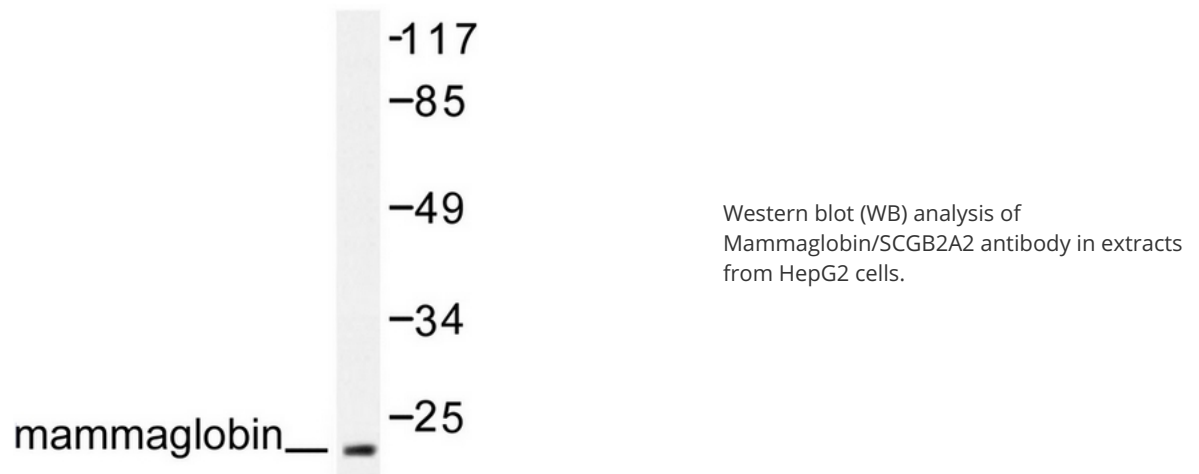
[View online »](#)

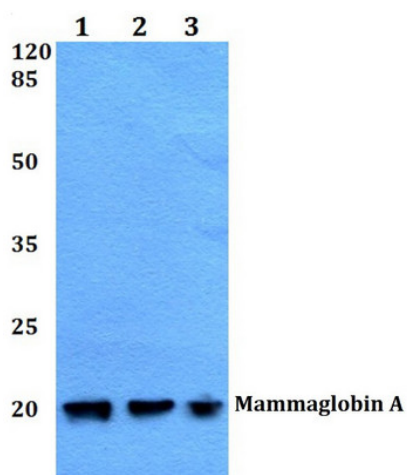
Background:

Secretoglobins (also called lipophilins or mammaglobins) are small secreted proteins of endocrine-responsive organs and mucosal epithelia that form multimeric complexes and correlate with the development of various human cancers. Lipophilin A and Lipophilin B are orthologs of prostatein (estramustine-binding protein), the major secretory glycoprotein of the rat ventral prostate gland. Lipophilin A, also designated LIPA, LPHA and secretoglobin, family 1D, member 1 (SCGB1D1), is a component of a heterodimeric molecule present in human tears. Lipophilin B, also designated LIPB, LPHB and secretoglobin, family 1D, member 2 (SCGB1D2), mRNA can be overexpressed in breast tumors and shows a high degree of correlation with the mRNA expression profile of mammaglobin. Histological detection in breast tissue of Mammaglobin A, also designated MGB1 and secretoglobin, family 2A, member 2 (SCGB2A2) and Mammaglobin B, also designated MGB2, Lipophilin C, LPHC, UGB3 and SCGB2A2, is a reliable diagnostic marker for breast tumors.

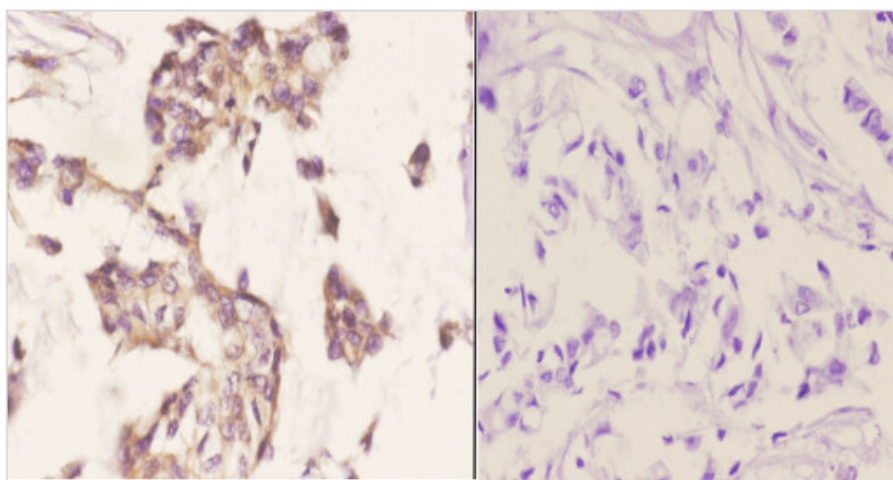
Synonyms:

Mammaglobin-A, Mammaglobin-1, Secretoglobin family 2A member 2, MGB1, UGB2, Prostatein peptide C3, Prostatic steroid-binding protein C3

Product images:




Western blot analysis of Mammaglobin/SCGB2A2 antibody at 1/500 dilution: Lane 1: A549 whole cell lysate. Lane 2: Raw264.7 whole cell lysate. Lane 3: Rat brain tissue lysate.



Immunohistochemistry analysis of Mammaglobin/SCGB2A2 antibody in paraffin-embedded human breast carcinoma tissue at 1/50 showing cytoplasmic and nucleus staining. Negative control (the right) Using PBS instead of primary antibody, secondary antibody is Goat Anti-Rabbit IgG Biotin followed by avidin peroxidase.