

## Product datasheet for **AP06399PU-N**

### LYN Rabbit Polyclonal Antibody

#### Product data:

Product Type:	Primary Antibodies
Applications:	ELISA, IHC, WB
Recommended Dilution:	<b>Western blot:</b> 1/500-1/1000. <b>Immunohistochemistry on paraffin sections:</b> 1/50-1/200.
Reactivity:	Human, Mouse, Rat
Host:	Rabbit
Clonality:	Polyclonal
Immunogen:	Synthetic peptide, corresponding to amino acids 461-510 of Human Lyn.
Specificity:	This antibody detects endogenous levels of Lyn protein. (region surrounding Thr501)
Formulation:	Phosphate buffered saline (PBS), pH 7.2. State: Aff - Purified State: Liquid purified Ig fraction Preservative: 15 mM sodium azide
Concentration:	1.0 mg/ml
Purification:	Affinity-chromatography using epitope-specific immunogen and the purity is > 95% (by SDS-PAGE)
Conjugation:	Unconjugated
Storage:	Store undiluted at 2-8°C for one month or (in aliquots) at -20°C for longer. Avoid repeated freezing and thawing.
Stability:	Shelf life: one year from despatch.
Predicted Protein Size:	~ 50,58 kDa
Gene Name:	LYN proto-oncogene, Src family tyrosine kinase
Database Link:	<a href="#">Entrez Gene 4067 Human P07948</a>



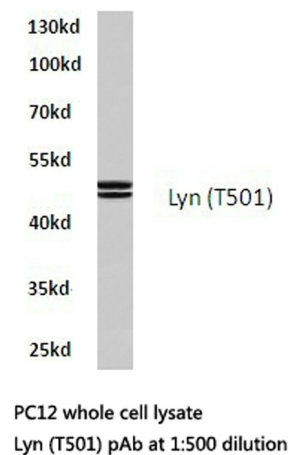
[View online »](#)

**Background:**

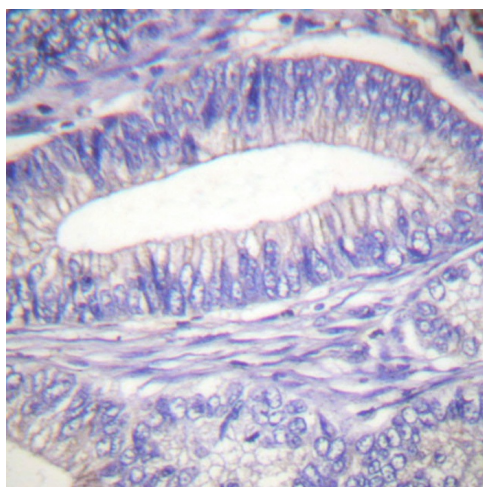
Src is the human homolog of the v-Src gene of the Rous sarcoma virus, also known as avian sarcoma virus or ASV. Src is the first proto-oncogenic non-receptor tyrosine kinase characterized in human. By virtue of common structural motifs, the Src family is composed of nine members in vertebrates, including Src, Yes, Fgr, Frk, Fyn, Lyn, Hck, Lck and Blk. Src-family kinases transduce signals that are involved in the control of a variety of cellular processes, including proliferation, differentiation, motility and adhesion. Src-family kinases contain an amino-terminal cell membrane anchor followed by an SH3 domain and an SH2 domain involved in modular association and activation, respectively. Src-family kinases are normally maintained in an inactive state and can be activated transiently during cellular events such as mitosis. The human Lyn gene maps to chromosome 8q13 and encodes a 505 amino acid protein. Hematopoietic tissues predominantly express Lyn, which influences normal immunoglobulin production and regulation.

**Synonyms:**

Tyrosine-protein kinase Lyn

**Product images:**

Western blot (WB) analysis of Lyn antibody in extracts from PC12 cells.



Immunohistochemistry (IHC) analyzes of Lyn antibody in paraffin-embedded human colon carcinoma tissue.