

## Product datasheet for **AP06394PU-S**

### Histone H3 Rabbit Polyclonal Antibody

#### Product data:

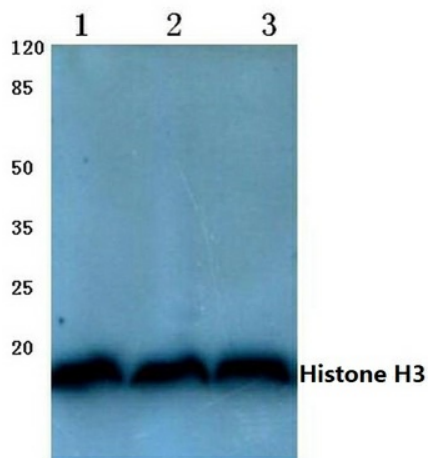
Product Type:	Primary Antibodies
Applications:	IHC, WB
Recommended Dilution:	<b>Western blot:</b> 1/500-1/1000. <b>Immunohistochemistry on Paraffin Sections:</b> 1/50-1/200.
Reactivity:	Human, Mouse, Rat
Host:	Rabbit
Clonality:	Polyclonal
Immunogen:	Synthetic peptide, corresponding to the N-terminal of Human Histone H3.
Specificity:	This antibody detects endogenous levels of Histone H3 protein. (region surrounding Thr22)
Formulation:	Phosphate buffered saline (PBS), pH 7.2 State: Aff - Purified State: Liquid purified Ig fraction (> 95% pure by SDS-PAGE) Preservative: 0.05% Sodium Azide
Concentration:	1.0 mg/ml
Purification:	Affinity Chromatography using epitope-specific immunogen
Conjugation:	Unconjugated
Storage:	Store undiluted at 2-8°C for one month or (in aliquots) at -20°C for longer. Avoid repeated freezing and thawing.
Stability:	Shelf life: one year from despatch.
Predicted Protein Size:	~17 kDa
Background:	Histones are basic nuclear proteins that are responsible for the nucleosome structure of the chromosomal fiber in eukaryotes. Nucleosomes consist of approximately 146 bp of DNA wrapped around a histone octamer composed of pairs of each of the four core histones (H2A, H2B, H3, and H4). The chromatin fibre is further compacted through the interaction of a linker histone, H1, with the DNA between the nucleosomes to form higher order chromatin structures. Covalent modifications of the canonical core histones, including acetylation, phosphorylation, methylation, and monoubiquitination are used to mark nucleosomes to create chromatin domains with a range of functions.



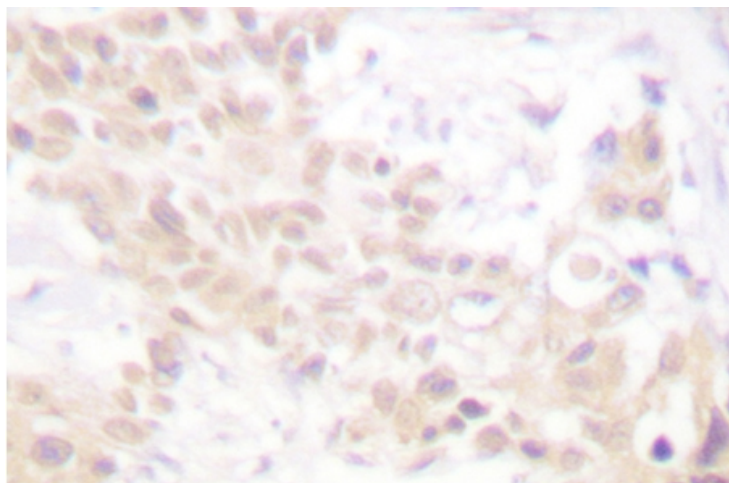
[View online »](#)

**Synonyms:** H3 Histone family, HIST1H3

## Product images:



Western blot (WB) analysis of Histone H3 antibody (Cat.-No.: [AP06394PU-N]) at 1/500 dilution Lane 1:Hela whole cell lysate Lane 2:Mou



Immunohistochemistry (IHC) analyzes of Histone H3 antibody (Cat.-No.: [AP06394PU-N] ) in paraffin-embedded human breast carcinoma tissue.