

Product datasheet for **AP06391PU-S**

GSK3 beta (GSK3B) Rabbit Polyclonal Antibody

Product data:

| | |
|-------------------------|---|
| Product Type: | Primary Antibodies |
| Applications: | IHC, WB |
| Recommended Dilution: | Western blot: 1/500-1/1000. Immunohistochemistry on paraffin sections: 1/50-1/200. |
| Reactivity: | Human, Mouse, Rat |
| Host: | Rabbit |
| Clonality: | Polyclonal |
| Immunogen: | Synthetic peptide, corresponding to amino acids N-terminus of Human GSK3 β . |
| Specificity: | This antibody detects endogenous levels of GSK-3 β protein. (region surrounding Ser2) |
| Formulation: | Phosphate buffered saline (PBS), pH 7.2. State: Aff - Purified State: Liquid purified Ig fraction Preservative: 0.05% sodium azide |
| Concentration: | 1.0 mg/ml |
| Purification: | Affinity-chromatography using epitope-specific immunogen and the purity is > 95% (by SDS-PAGE) |
| Conjugation: | Unconjugated |
| Storage: | Store undiluted at 2-8°C for one month or (in aliquots) at -20°C for longer. Avoid repeated freezing and thawing. |
| Stability: | Shelf life: one year from despatch. |
| Predicted Protein Size: | ~ 46 kDa |
| Gene Name: | glycogen synthase kinase 3 beta |
| Database Link: | Entrez Gene 2932 Human P49841 |



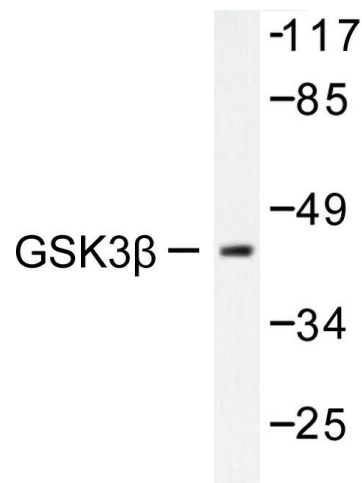
[View online »](#)

Background:

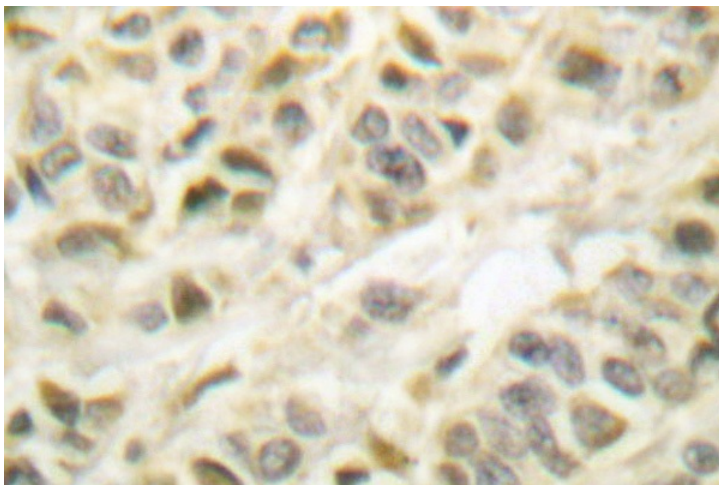
Glycogen synthase kinase 3, or GSK-3, is a serine/threonine, proline-directed kinase involved in a diverse array of signaling pathways, including glycogen synthesis and cellular adhesion, and has been implicated in Alzheimer's disease. Two forms of GSK-3, designated GSK-3 α and GSK-3 β , have been identified and differ in their subcellular localization. Tau, a microtubule-binding protein which serves to stabilize microtubules in growing axons, is found to be hyper-phosphorylated in paired helical filaments (PHF), the major fibrous component of neurofibrillary lesions associated with Alzheimer's disease. Hyperphosphorylation of Tau is thought to be the critical event leading to the assembly of PHF. Six Tau protein isoforms have been identified, all of which are phosphorylated by GSK-3. This presents the possibility that miscues in GSK-3 signaling contribute to the onset of Alzheimer's disease.

Synonyms:

GSK-3 beta, Glycogen synthase kinase-3 beta, GSK3B

Product images:

Western blot (WB) analysis of GSK3 β antibody in extracts from 293 cells treated with serum 10% 15? or from Jurkat cells treated with Insulin 0.01U/ml 15?.



Immunohistochemistry (IHC) analyzes of GSK3 β antibody in paraffin-embedded human breast carcinoma tissue.