

## Product datasheet for **AP06390PU-N**

### Glucocorticoid Receptor (NR3C1) Rabbit Polyclonal Antibody

#### Product data:

Product Type:	Primary Antibodies
Applications:	IHC, WB
Recommended Dilution:	<b>Western blot:</b> 1/500-1/1000. <b>Immunohistochemistry on paraffin sections</b> 1/50-1/200.
Reactivity:	Human, Mouse, Porcine, Rat
Host:	Rabbit
Clonality:	Polyclonal
Immunogen:	Synthetic peptide, corresponding to amino acids 201-250 of Human GR.
Specificity:	This antibody detects endogenous levels of GR protein. (region surrounding Leu224)
Formulation:	Phosphate buffered saline (PBS), pH 7.2. State: Aff - Purified State: Liquid purified Ig fraction Preservative: 0.05% sodium azide
Concentration:	1.0 mg/ml
Purification:	Affinity-chromatography using epitope-specific immunogen and the purity is > 95% (by SDS-PAGE)
Conjugation:	Unconjugated
Storage:	Store undiluted at 2-8°C for one month or (in aliquots) at -20°C for longer. Avoid repeated freezing and thawing.
Stability:	Shelf life: one year from despatch.
Predicted Protein Size:	~ 90,95 kDa
Gene Name:	nuclear receptor subfamily 3 group C member 1
Database Link:	<a href="#">Entrez Gene 14815 Mouse</a> <a href="#">Entrez Gene 24413 Rat</a> <a href="#">Entrez Gene 2908 Human P04150</a>



[View online »](#)

**Background:**

The glucocorticoid receptor (GR) is an ubiquitously expressed transcription factor that mediates the effects of glucocorticoids. The most abundant isoform is GR $\alpha$ . GR induces or represses the expression of genes in response to glucocorticoids, mediating such processes as apoptosis and cell growth and differentiation. A significant class of genes suppressed by GR is controlled by the transcription factor AP-1. GR has also been shown to be the limiting factor in the induction of gene expression by glucocorticoids. It has been revealed that GR forms a complex with HSP 90, rendering the nonligand bound receptor transcriptionally inactive. More importantly, mutant GRs lacking the signaling domain remain constitutively active.

**Synonyms:**

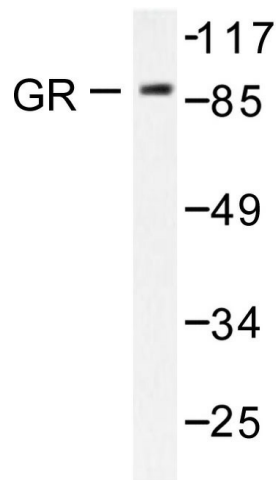
NR3C1, GR, GRL

**Protein Families:**

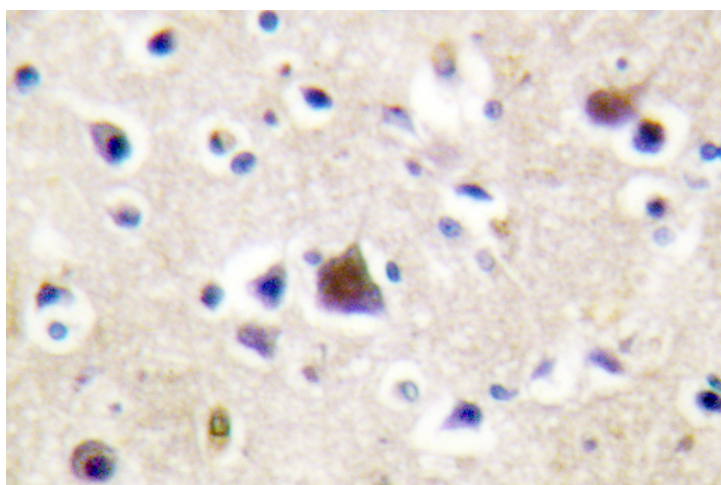
Druggable Genome, Nuclear Hormone Receptor, Transcription Factors

**Protein Pathways:**

Neuroactive ligand-receptor interaction

**Product images:**

Western blot (WB) analysis of GR antibody in extracts from Jurkat cells treated with EGF 200ng/ml 15'.



Immunohistochemistry (IHC) analyzes of GR antibody in paraffin-embedded human brain tissue.