

Product datasheet for **AP06387PU-M**

Ephrin B1 (EFNB1) (+Ephrin-B2) Rabbit Polyclonal Antibody

Product data:

Product Type:	Primary Antibodies
Applications:	IHC, WB
Recommended Dilution:	Western blot: 1/500-1/1000. Immunohistochemistry on Paraffin Sections: 1/50-1/200.
Reactivity:	Human, Mouse, Rat
Host:	Rabbit
Clonality:	Polyclonal
Immunogen:	Synthetic peptide, corresponding to amino acids 300-340 of Human Ephrin-B1.
Specificity:	This antibody detects endogenous levels of Ephrin-B protein. (region surrounding Gln324)
Formulation:	Phosphate buffered saline (PBS), pH~7.2 State: Aff - Purified State: Liquid purified Ig fraction (> 95% pure by SDS-PAGE). Preservative: 0.05% Sodium Azide
Concentration:	1.0 mg/ml
Purification:	Affinity Chromatography using epitope-specific immunogen.
Conjugation:	Unconjugated
Storage:	Store undiluted at 2-8°C for one month or (in aliquots) at -20°C for longer. Avoid repeated freezing and thawing.
Stability:	Shelf life: one year from despatch.
Predicted Protein Size:	~59 kDa
Gene Name:	ephrin B1
Database Link:	<u>Entrez Gene 13641 Mouse</u> <u>Entrez Gene 25186 Rat</u> <u>Entrez Gene 1947 Human</u> <u>P98172</u>



[View online »](#)

Background:

Ephrins, which act as ligands for Eph receptors, are cell-surface proteins which fall into two categories, ephrin-A and ephrin-B based on their structure and function. Ephrin-B proteins are transmembrane and have conserved cytoplasmic tyrosine residues that are phosphorylated upon interaction with an EphB receptor. Eph receptors and ephrins exhibit complementary expression in many tissues during embryogenesis indicating that bidirectional activation of Eph receptors and ephrin-B proteins may occur at expression domain interfaces. Ephrin-B1 transduces outside-in signals through C-terminal protein interactions that effect integrin-mediated cell attachment and migration. The distribution of ephrin-B1 in the developing retina suggests that it influences retinal axon mapping along the dorsal-ventral axis and may be involved in intratectal development.

Synonyms:

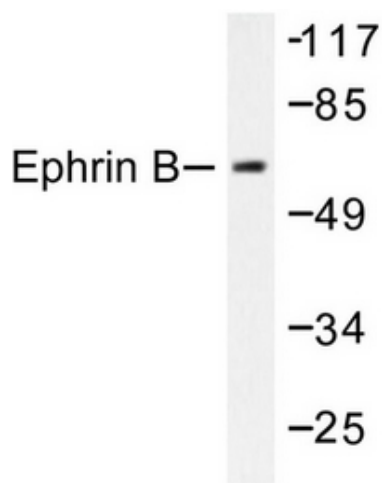
EFL-3, EFNB1, EFL3, EPLG2, LERK2, ELK-L, LERK-2, CEK5-L

Protein Families:

Druggable Genome, Transmembrane

Protein Pathways:

Axon guidance

Product images:


Western blot analysis of Ephrin-B antibody in extracts from 293 cells treated with EGF 200ng/ml 5' or 293 cells treated with TNF-a 20ng/ml 30'.