

Product datasheet for **AP06385PU-S**

Dynamin 1 (DNM1) Rabbit Polyclonal Antibody

Product data:

Product Type:	Primary Antibodies
Applications:	ELISA, IHC, WB
Recommended Dilution:	Western blot: 1/500-1/1000. Immunohistochemistry on paraffin sections: 1/50-1/200.
Reactivity:	Human, Mouse, Rat
Host:	Rabbit
Clonality:	Polyclonal
Immunogen:	Synthetic peptide, corresponding to amino acids 750-800 of Human Dynamin-1.
Specificity:	This antibody detects endogenous levels of Dynamin-1 protein. (region surrounding Val768)
Formulation:	Phosphate buffered saline (PBS), pH~7.2 containing 0.05% Sodium Azide as preservative. State: Aff - Purified State: Liquid purified Ig fraction (> 95% pure by SDS-PAGE).
Concentration:	1.0 mg/ml
Purification:	Affinity Chromatography using epitope-specific immunogen.
Conjugation:	Unconjugated
Storage:	Store undiluted at 2-8°C for one month or (in aliquots) at -20°C for longer. Avoid repeated freezing and thawing.
Stability:	Shelf life: One year from despatch.
Predicted Protein Size:	~ 98 kDa
Gene Name:	dynamin 1
Database Link:	Entrez Gene 1759 Human Q05193



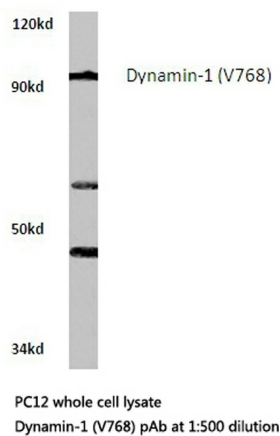
[View online »](#)

Background:

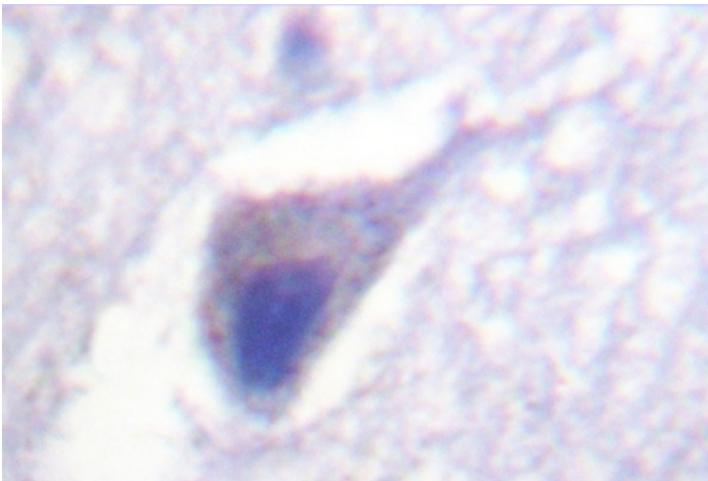
Members of the Dynamin family, including Dynamin I and Dynamin II, are GTPase, microtubule-associated proteins which are involved in endocytosis, synaptic transmission and neurogenesis. Dynamin I is localized to the central nervous system, while Dynamin II exhibits ubiquitous distribution with highest expression in testis. Both Dynamin proteins contain SH3 and proline-rich domains that mediate interactions between the Dynamins and effectors of their GTPase activity. The interactions with these effectors, which include microtubules, acidic phospholipids and SH3 domain-containing proteins, are required for rapid endocytosis. Dynamin I appears to be recruited to Clathrin coated pits by SH3 domain interaction with Amphiphysin, a protein highly expressed in brain.

Synonyms:

DNM1, DNM

Product images:

Western blot (WB) analysis of Dynamin-1 antibody in extracts from PC12 cells.



Immunohistochemistry analyzes of Dynamin-1 antibody in Paraffin-Embedded Human tbrain tissue.