

Product datasheet for **AP06381PU-N**

Cyclin B1 (CCNB1) Rabbit Polyclonal Antibody

Product data:

Product Type:	Primary Antibodies
Applications:	IF, IHC, WB
Recommended Dilution:	Western blot: 1/500-1/1000. Immunohistochemistry on paraffin sections 1/50-1/200. Immunofluorescence: 1/50-1/200.
Reactivity:	Human, Mouse, Rat
Host:	Rabbit
Clonality:	Polyclonal
Immunogen:	Synthetic peptide, corresponding to amino acids 90-140 of Human Cyclin B1.
Specificity:	This antibody detects endogenous levels of Cyclin B1 protein. (region surrounding Ile120)
Formulation:	Phosphate buffered saline (PBS), pH 7.2. State: Aff - Purified State: Liquid purified Ig fraction Preservative: 0.05% sodium azide
Concentration:	1.0 mg/ml
Purification:	Affinity-chromatography using epitope-specific immunogen and the purity is > 95% (by SDS-PAGE)
Conjugation:	Unconjugated
Storage:	Store undiluted at 2-8°C for one month or (in aliquots) at -20°C for longer. Avoid repeated freezing and thawing.
Stability:	Shelf life: one year from despatch.
Predicted Protein Size:	~ 60 kDa
Gene Name:	cyclin B1
Database Link:	Entrez Gene 891 Human P14635



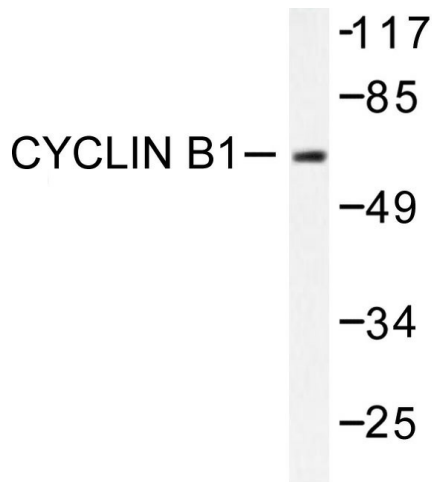
[View online »](#)

Background:

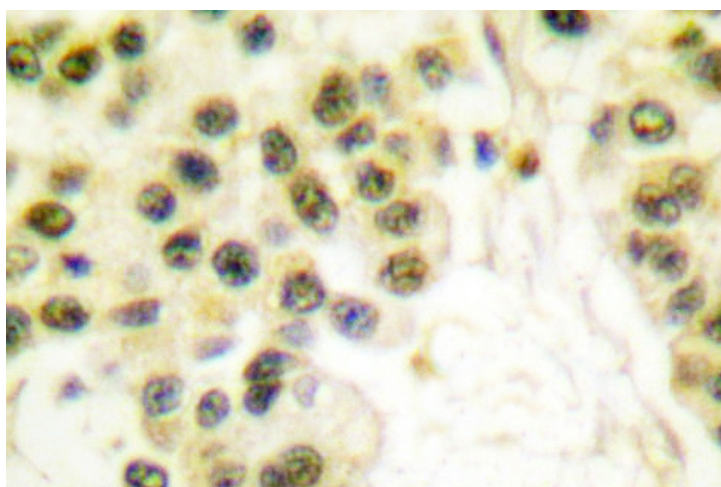
In eukaryotic cells, mitosis is initiated following the activation of a protein kinase known variously as maturation-promoting factor, M-phase specific histone kinase or M-phase kinase. This protein kinase is composed of a catalytic subunit (Cdc2), a regulatory subunit (cyclin B) and a low molecular weight subunit (p13 SUC1). The Cdc/cyclin enzyme is subject to multiple levels of control of which the regulation of the catalytic subunit by tyrosine phosphorylation is the best understood. Tyrosine phosphorylation inhibits the Cdc2/cyclin B enzyme and tyrosine dephosphorylation, occurring at the onset of mitosis, directly activates the pre-MPF complex. Evidence has established that B-type cyclins not only act on M-phase regulatory subunits of the Cdc2 protein kinase, but also activate the Cdc25A and Cdc25B endogenous tyrosine phosphatase, of which Cdc2 is the physiological substrate. The specificity of this effect is shown by the inability of either cyclin A or cyclin D1 to display any such stimulation of Cdc25A or Cdc25B.

Synonyms:

CCNB1, CCNB, Cyclin-B1

Product images:

Western blot (WB) analysis of Cyclin B1 antibody in extracts from HeLa cells treated with serum 10% 15' HepG2.



Immunohistochemistry (IHC) analyzes of Cyclin B1 antibody in paraffin-embedded human breast carcinoma tissue.