

Product datasheet for **AP06376PU-N**

Caspase 8 (CASP8) Rabbit Polyclonal Antibody

Product data:

Product Type:	Primary Antibodies
Applications:	IHC, WB
Recommended Dilution:	Western blot: 1/500-1/1000. Immunohistochemistry on paraffin sections: 1/50-1/200.
Reactivity:	Human, Mouse, Rat
Host:	Rabbit
Clonality:	Polyclonal
Immunogen:	Synthetic peptide, corresponding to amino acids 312-368 of Human Caspase-8.
Specificity:	This antibody detects endogenous levels of Caspase 8 protein. (region surrounding Thr341)
Formulation:	Phosphate buffered saline (PBS), pH 7.2. State: Aff - Purified State: Liquid purified Ig fraction Preservative: 0.05% sodium azide
Concentration:	1.0 mg/ml
Purification:	Affinity-chromatography using epitope-specific immunogen and the purity is > 95% (by SDS-PAGE)
Conjugation:	Unconjugated
Storage:	Store undiluted at 2-8°C for one month or (in aliquots) at -20°C for longer. Avoid repeated freezing and thawing.
Stability:	Shelf life: one year from despatch.
Predicted Protein Size:	~ 38, 55 kDa
Gene Name:	caspase 8
Database Link:	Entrez Gene 841 Human Q14790



[View online »](#)

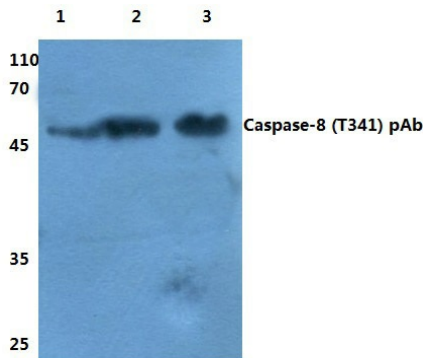
Background:

Caspases are cysteine proteases, expressed as inactive precursors, that mediate apoptosis by proteolysis of specific substrates. Caspases have the ability to cleave after aspartic acid residues. There are two classes of caspases involved in apoptosis; initiators (activation by receptor cluster) and effectors (activation by mitochondrial permeability transition). Proapoptotic signals autocatalytically activate initiator caspases, such as Caspase 8 and Caspase 9. Activated initiator caspases then process effector caspases, such as Caspase 3 and Caspase 7, which in turn cause cell collapse.

Synonyms:

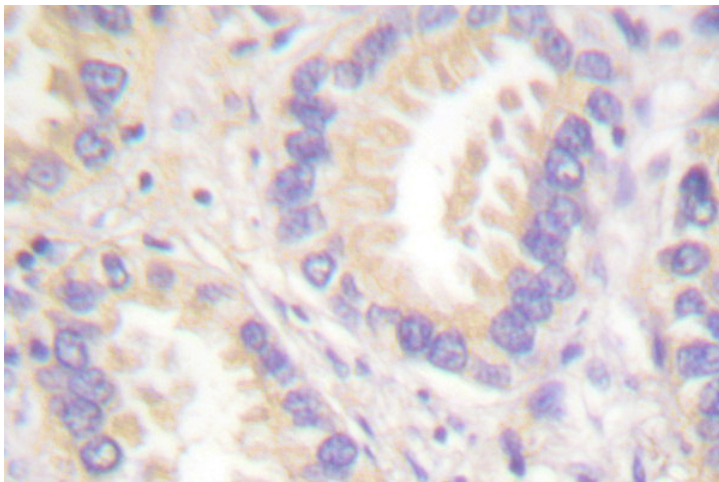
CASP-8, CASP8, MCH5, CAP4

Product images:



Lane1: SP2/0 whole cell lysate
 Lane2: Rat kidney tissue lysate
 Lane3: Hela whole cell lysate
 Caspase-8 (T341) pAb at 1:500 dilution

Western blot (WB) analysis of Caspase 8 antibody



Immunohistochemistry (IHC) analyzes of Caspase 8 antibody in paraffin-embedded human lung carcinoma tissue.