

## Product datasheet for **AP06373PU-M**

### CEBP Alpha (CEBPA) Rabbit Polyclonal Antibody

#### Product data:

Product Type:	Primary Antibodies
Applications:	IHC, WB
Recommended Dilution:	<b>Western blot:</b> 1/500-1/1000. <b>Immunohistochemistry on Paraffin Sections:</b> 1/50-1/200.
Reactivity:	Human, Mouse, Rat
Host:	Rabbit
Clonality:	Polyclonal
Immunogen:	Synthetic peptide, corresponding to amino acids N-terminus of Human C/EBP- $\alpha$ .
Specificity:	This antibody detects endogenous levels of C/EBP-alpha protein. (region surrounding Met15)
Formulation:	Phosphate buffered saline (PBS), pH~7.2 State: Aff - Purified State: Liquid purified Ig fraction (> 95% pure by SDS-PAGE). Preservative: 0.05% sodium azide
Concentration:	1.0 mg/ml
Purification:	Affinity Chromatography using epitope-specific immunogen.
Conjugation:	Unconjugated
Storage:	Store the antibody undiluted at 2-8°C for one month or (in aliquots) at -20°C for longer. Avoid repeated freezing and thawing.
Stability:	Shelf life: One year from despatch.
Predicted Protein Size:	~30.43 kDa
Gene Name:	CCAAT/enhancer binding protein alpha
Database Link:	<u><a href="#">Entrez Gene 1050 Human P49715</a></u>



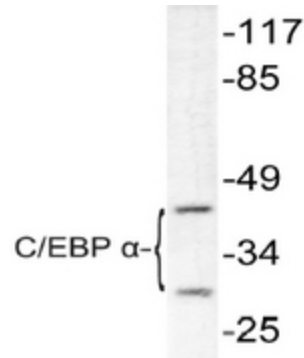
[View online »](#)

**Background:**

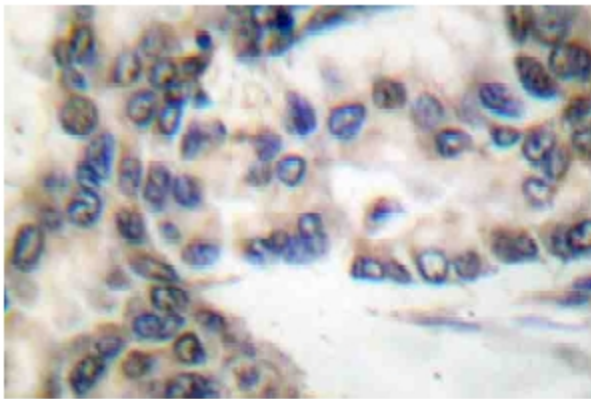
The protein encoded by this intronless gene is a bZIP transcription factor which can bind as a homodimer to certain DNA regulatory regions. It can also form heterodimers with the related proteins CEBP alpha, CEBP delta, and CEBP gamma. The encoded protein is important in the regulation of genes involved in immune and inflammatory responses and has been shown to bind to the IL1 response element in the IL6 gene, as well as to regulatory regions of several acute-phase and cytokine genes. In addition, the encoded protein can bind the promoter and upstream element and stimulate the expression of the collagen type I gene.

**Synonyms:**

C/EBP alpha

**Product images:**


Western blot (WB) analysis of C/EBPA antibody in extracts from 293 cells treated with Insulin 0.01U/ml 15'.



Immunohistochemistry (IHC) analysis of C/EBPA antibody in paraffin-embedded human lung carcinoma tissue.