

Product datasheet for **AP06371PU-N**

BACE1 Rabbit Polyclonal Antibody

Product data:

Product Type:	Primary Antibodies
Applications:	IF, IHC
Recommended Dilution:	Immunohistochemistry on paraffin sections: 1/50-1/200. Immunofluorescence: 1/50-1/200.
Reactivity:	Human, Mouse
Host:	Rabbit
Clonality:	Polyclonal
Immunogen:	Synthetic peptide, corresponding to amino acids 480-520 of Human BACE.
Specificity:	This antibody detects endogenous levels of BACE protein. (region surrounding Asp492)
Formulation:	Phosphate buffered saline (PBS), pH 7.2. State: Aff - Purified State: Liquid purified Ig fraction Preservative: 0.05% sodium azide
Concentration:	1.0 mg/ml
Purification:	Affinity-chromatography using epitope-specific immunogen and the purity is > 95% (by SDS-PAGE)
Conjugation:	Unconjugated
Storage:	Store undiluted at 2-8°C for one month or (in aliquots) at -20°C for longer. Avoid repeated freezing and thawing.
Stability:	Shelf life: one year from despatch.
Gene Name:	beta-secretase 1
Database Link:	Entrez Gene 23621 Human P56817



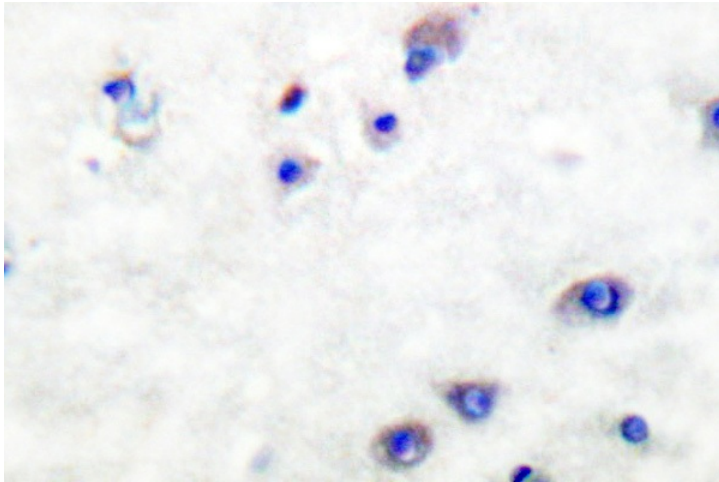
[View online »](#)

Background:

Autosomal dominant Alzheimer's disease is caused by mutations in the gene encoding the β -amyloid protein precursor (APP). Amyloid β -peptide ($A\beta$), the major feature of amyloid plaques in Alzheimer's patients, is the product of APP cleavage by β - and γ -secretases. BACE is the transmembrane protease which cleaves $A\beta$ from APP. BACE and the related protein Asp1 are both widely expressed in human tissue with the highest levels in the pancreas. BACE has a molecular mass of ~70 kDa, larger than predicted due to glycosylation, and is localized within Golgi and endosomes.

Synonyms:

BACE, KIAA1149, Beta-secretase 1, Memapsin-2, Aspartyl protease 2, ASP2, BACE-1

Product images:

Immunohistochemistry (IHC) analyzes of BACE antibody in paraffin-embedded human brain tissue.