

## Product datasheet for **AP06370PU-M**

### Amylin (IAPP) Rabbit Polyclonal Antibody

#### Product data:

Product Type:	Primary Antibodies
Applications:	IF, IHC, WB
Recommended Dilution:	<b>Western blot:</b> 1/500-1/1000. <b>Immunohistochemistry on paraffin sections</b> 1/50-1/200. <b>Immunofluorescence:</b> 1/50-1/200.
Reactivity:	Human, Mouse, Rat
Host:	Rabbit
Clonality:	Polyclonal
Immunogen:	Synthetic peptide, corresponding to amino acids 1-50 of Human Amylin.
Specificity:	This antibody detects endogenous levels of Amylin protein. (region surrounding His28)
Formulation:	Phosphate buffered saline (PBS), pH 7.2. State: Aff - Purified State: Liquid purified Ig fraction Preservative: 0.05% sodium azide
Concentration:	1.0 mg/ml
Purification:	Affinity-chromatography using epitope-specific immunogen and the purity is > 95% (by SDS-PAGE)
Conjugation:	Unconjugated
Storage:	Store undiluted at 2-8°C for one month or (in aliquots) at -20°C for longer. Avoid repeated freezing and thawing.
Stability:	Shelf life: one year from despatch.
Predicted Protein Size:	~ 10 kDa
Gene Name:	islet amyloid polypeptide
Database Link:	<a href="#">Entrez Gene 3375 Human P10997</a>



[View online »](#)

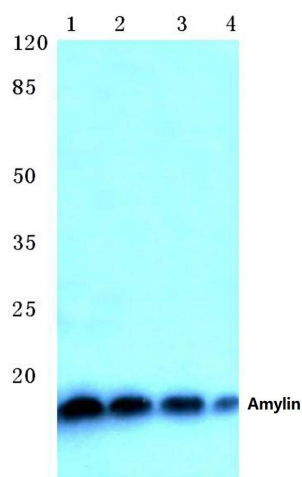
## Background:

Adrenomedullin (AM), alpha- and beta-calcitonin gene-related peptide (CGRP), calcitonin (CT), and amylin are homologous polypeptides with overlapping biological actions such as vasodilatation and inhibition of bone resorption. Amylin (Islet/insulinoma amyloid polypeptide or IAPP) is a 37-amino acid monomeric polypeptide isolated from pancreatic amyloid. This protein, with a calculated molecular mass of 4 kDa, is a major component of amyloid-rich pancreatic extracts of three type 2 diabetic patients. IAPP has cysteine residues in positions 2 and 7, a feature found in all known calcitonin gene-related peptides. IAPP shows 46% amino acid sequence homology with CGRP II. Since IAPP has been demonstrated immunochemically in normal beta cells of several mammals, it probably has an important role in respect to pancreatic islet function.

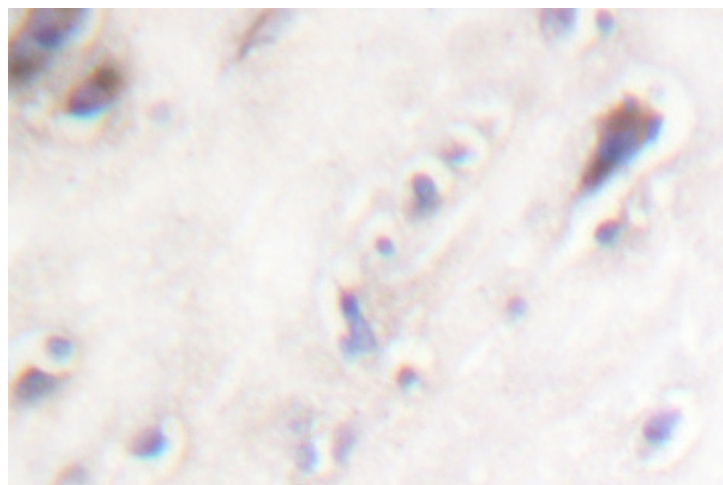
## Synonyms:

AMYLIN; DAP; IAP

## Product images:



Western blot (WB) analysis of Amylin antibody at 1/500 dilution Lane 1: Hela whole cell lysate Lane 2: MCF-7 whole cell lysate Lane 3: Mouse kidney tissue lysate Lane 4: Rat kidney tissue lysate



Immunohistochemistry (IHC) analysis of Amylin antibody in paraffin-embedded human brain pancreas tissue.