

## Product datasheet for **AP06369PU-M**

### **RUNX1 Rabbit Polyclonal Antibody**

#### **Product data:**

Product Type:	Primary Antibodies
Applications:	IF, IHC, WB
Recommended Dilution:	<b>Western blot:</b> 1/500-1/1000. <b>Immunohistochemistry on paraffin sections:</b> 1/50-1/200. <b>Immunofluorescence:</b> 1/50-1/200.
Reactivity:	Human, Mouse, Rat
Host:	Rabbit
Clonality:	Polyclonal
Immunogen:	Synthetic peptide, corresponding to amino acids 260-310 of Human RUNX1.
Specificity:	This antibody detects endogenous levels of AML1 protein. (region surrounding His297)
Formulation:	Phosphate buffered saline (PBS), pH 7.2. State: Aff - Purified State: Liquid purified Ig fraction Preservative: 15 mM sodium azide
Concentration:	1.0 mg/ml
Purification:	Affinity-chromatography using epitope-specific immunogen and the purity is > 95% (by SDS-PAGE)
Conjugation:	Unconjugated
Storage:	Store undiluted at 2-8°C for one month or (in aliquots) at -20°C for longer. Avoid repeated freezing and thawing.
Stability:	Shelf life: one year from despatch.
Predicted Protein Size:	~ 55 kDa
Gene Name:	runt related transcription factor 1
Database Link:	<a href="#">Entrez Gene 861 Human Q01196</a>



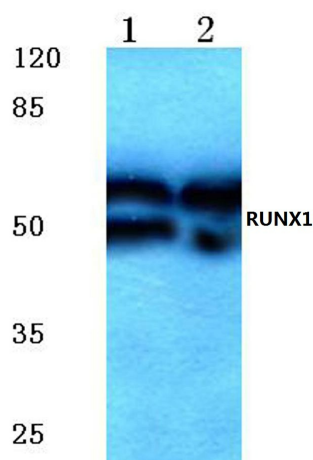
[View online »](#)

**Background:**

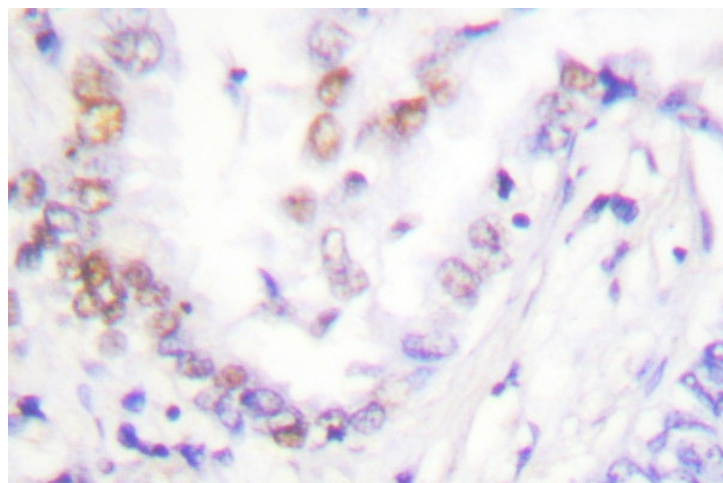
AML1 (also known as Runx1, CBFA2, and PEBP2αB) is a member of the core binding factor (CBF) family of transcription factors. It is required for normal development of all hematopoietic lineages. AML1 forms a heterodimeric DNA binding complex with its partner protein CBFβ and regulates the expression of cellular genes by binding to promoter and enhancer elements. AML1 is commonly translocated in hematopoietic cancers: chromosomal translocations include t(8;21) AML1-ETO, t(12;21) TEL-AML, and t(8;21) AML-M2. Phosphorylation of AML1 on several potential serine and threonine sites, including Ser249, is thought to occur in an Erk-dependent manner.

**Synonyms:**

Runt-related transcription factor, 1, AML1, AML-1, AMLCR1, Acute myeloid leukemia 1 protein, AML1-EVI-1, EVI-1, CBFA2, CBF-alpha-2, PEA2-alpha B, PEBP2-alpha B, PEBP2A2

**Product images:**


Western blot (WB) analysis of RUNX1 antibody at 1/500 dilution Lane 1: THP-1 whole cell lysate  
Lane 2: Jurkat whole cell lysate



Immunohistochemistry (IHC) analysis of AML1 antibody in paraffin-embedded human lung carcinoma tissue.