

Product datasheet for **AP06365PU-N**

EIF4EBP1 Rabbit Polyclonal Antibody

Product data:

Product Type:	Primary Antibodies
Applications:	IHC, WB
Recommended Dilution:	Western blot: 1/500-1/1000. Immunohistochemistry on paraffin sections: 1/50-1/200.
Reactivity:	Human, Mouse, Rat
Host:	Rabbit
Clonality:	Polyclonal
Immunogen:	Synthetic peptide, corresponding to amino acids 32-81 of Human 4E-BP1.
Specificity:	This antibody detects endogenous levels of 4E-BP1 protein. (region surrounding asn63)
Formulation:	Phosphate buffered saline (PBS), pH 7.2. State: Aff - Purified State: Liquid purified Ig fraction Preservative: 0.05% sodium azide
Concentration:	1.0 mg/ml
Purification:	Affinity-chromatography using epitope-specific immunogen and the purity is > 95% (by SDS-PAGE)
Conjugation:	Unconjugated
Storage:	Store undiluted at 2-8°C for one month or (in aliquots) at -20°C for longer. Avoid repeated freezing and thawing.
Stability:	Shelf life: one year from despatch.
Predicted Protein Size:	~ 15 to 20 kDa
Gene Name:	eukaryotic translation initiation factor 4E binding protein 1
Database Link:	Entrez Gene 1978 Human Q13541



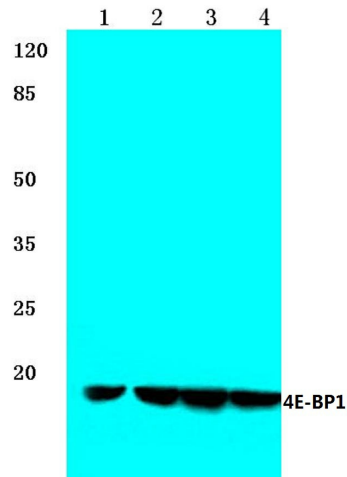
[View online »](#)

Background:

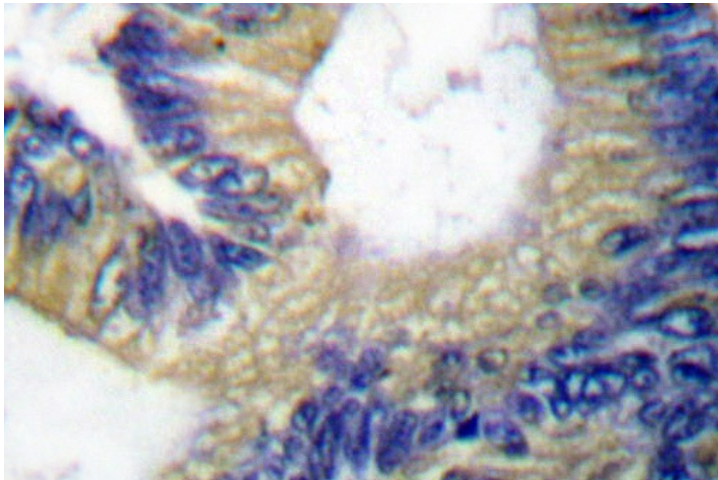
The translation of proteins from eukaryotic mRNA is initiated by the multisubunit complex eIF-4F, which associates with the mRNA 5' cap structure. eIF-4E, a component of eIF-4F, is responsible for binding to the 5' cap structure and for the assembly of the eIF-4F complex. The regulatory protein 4E-BP1, also referred to as PHAS-I, inhibits eIF-4E function. Phosphorylation of 4E-BP1 by S6 kinase p70, MAP kinases or PKCs causes the disassociation of 4E-BP1 from eIF-4E, promoting translation. A protein that is functionally related to 4E-BP1, designated 4E-BP2, also associates with eIF-4E.

Synonyms:

PHAS-I, PHAS-1, PHAS1

Product images:

Western blot (WB) analysis of 4E-BP1 antibody at 1/500 dilution Lane 1 :Hela whole cell lysate Lane 2 :MCF-7 whole cell lysate Lane 3 :Mouse kidney tissue lysate Lane 4 :Rat liver tissue lysate



Immunohistochemistry (IHC) analyzes of 4E-BP1 antibody in paraffin-embedded human colon carcinoma tissue.