

Product datasheet for **AP06356PU-N**

Transglutaminase 2 (TGM2) Rabbit Polyclonal Antibody

Product data:

Product Type:	Primary Antibodies
Applications:	IHC, WB
Recommended Dilution:	Western blot: 1/500-1/1000. Immunohistochemistry on paraffin sections: 1/50-1/200.
Reactivity:	Human, Mouse
Host:	Rabbit
Clonality:	Polyclonal
Immunogen:	Synthetic peptide, corresponding to the N-terminus of Human TGase2.
Specificity:	This antibody detects endogenous levels of Transglutaminase 2 protein. (region surrounding Asp11)
Formulation:	Phosphate buffered saline (PBS) with 15 mM sodium azide, approx. pH 7.2. State: Aff - Purified State: Liquid purified Ig fraction
Concentration:	1.0 mg/ml
Purification:	Affinity-chromatography using epitope-specific immunogen and the purity is > 95% (by SDS-PAGE)
Conjugation:	Unconjugated
Storage:	Store undiluted at 2-8°C for one month or (in aliquots) at -20°C for longer. Avoid repeated freezing and thawing.
Stability:	Shelf life: one year from despatch.
Predicted Protein Size:	~ 77 kDa
Gene Name:	transglutaminase 2
Database Link:	Entrez Gene 7052 Human P21980



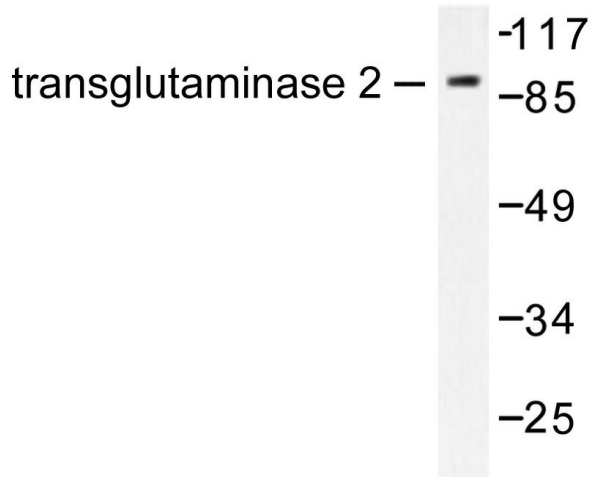
[View online »](#)

Background:

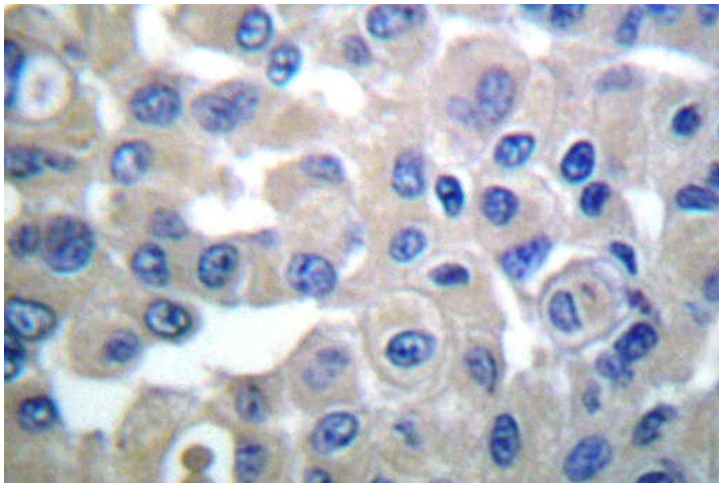
Tissue transglutaminase is a calcium activated enzyme which catalyzes the cross linking of proteins and the conjugation of polyamines to proteins. The identification of transglutaminase as the main antigen of endomysium antibodies allows a new diagnostic approach to celiac disease (CD). CD, a genetic, immunologically mediated small bowel enteropathy that causes malabsorption, is a relatively common disorder in Western countries.

Synonyms:

TGase C, TGase-H, Tissue transglutaminase

Product images:


Western blot (WB) analysis of Transglutaminase 2 antibody in extracts from HuvEc cells.



Immunohistochemistry (IHC) analyzes of Transglutaminase 2 antibody in paraffin-embedded human breast carcinoma tissue.