

Product datasheet for **AP06349PU-M**

TGF beta Receptor II (TGFB2) Rabbit Polyclonal Antibody

Product data:

Product Type:	Primary Antibodies
Applications:	IHC, WB
Recommended Dilution:	Western blot: 1/500-1/1000. Immunohistochemistry on paraffin sections 1/50-1/200.
Reactivity:	Human, Mouse, Rat
Host:	Rabbit
Clonality:	Polyclonal
Immunogen:	Synthetic peptide, corresponding to amino acids 100-150 of Human TGFβ RII.
Specificity:	This antibody detects endogenous levels of TGF beta Receptor II protein. (region surrounding Ile122)
Formulation:	Phosphate buffered saline (PBS), pH~7.2 State: Aff - Purified State: Liquid purified Ig fraction (> 95% by SDS-PAGE) Preservative: 0.05% Sodium Azide
Concentration:	1.0 mg/ml
Purification:	Affinity Chromatography using epitope-specific immunogen
Conjugation:	Unconjugated
Storage:	Store undiluted at 2-8°C for one month or (in aliquots) at -20°C for longer. Avoid repeated freezing and thawing.
Stability:	Shelf life: one year from despatch.
Predicted Protein Size:	~65.0 kDa
Gene Name:	transforming growth factor beta receptor 2
Database Link:	<u>Entrez Gene 7048 Human</u> <u>P37173</u>



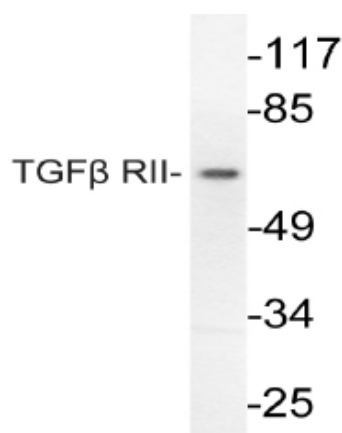
[View online »](#)

Background:

A total of three members of the TGFbeta family, TGFbeta1, TGFbeta2 and TGFbeta3, have been identified in mammals. Each is synthesized as a latent precursor that is subsequently cleaved forming the 112 amino acid growth factor which becomes active upon dimerization. TGFbetas mediate their activity by high affinity binding to the type II receptor (TGFbeta RII) transmembrane protein with a cytoplasmic serine-threonine kinase domain. For signaling growth inhibition and early gene responses the type II receptor requires both its kinase activity and association with a TGFbeta-binding protein, designated the type I receptor. Two independent groups have recently described the cloning and sequence analysis of genes encoding TGFβ type I receptor proteins designated ALK-5 (TbetaR-1) and TSR-1, respectively.

Synonyms:

TGF-beta receptor type-2, TGF-beta receptor type II, TGF-beta type II receptor, TbetaR-II, TGFR-2

Product images:


Western blot analysis of TGF BR2 antibody in extracts from HepG2 cells (65K) or LOVO cells (100K).