

## Product datasheet for **AP06348PU-M**

### **TGF alpha (TGFA) Rabbit Polyclonal Antibody**

#### **Product data:**

Product Type:	Primary Antibodies
Applications:	IHC, WB
Recommended Dilution:	<b>Western blot:</b> 1/500-1/1000. <b>Immunohistochemistry on paraffin sections:</b> 1/50-1/200.
Reactivity:	Human, Mouse, Rat
Host:	Rabbit
Clonality:	Polyclonal
Immunogen:	Synthetic peptide, corresponding to amino acids 111-160 of Human TGF $\alpha$ .
Specificity:	This antibody detects endogenous levels of TGF alpha protein. (region surrounding Arg139)
Formulation:	Phosphate buffered saline (PBS), pH 7.2. State: Aff - Purified State: Liquid purified Ig fraction Preservative: 0.05% sodium azide
Concentration:	1.0 mg/ml
Purification:	Affinity-chromatography using epitope-specific immunogen and the purity is > 95% (by SDS-PAGE)
Conjugation:	Unconjugated
Storage:	Store undiluted at 2-8°C for one month or (in aliquots) at -20°C for longer. Avoid repeated freezing and thawing.
Stability:	Shelf life: one year from despatch.
Predicted Protein Size:	~ 10, 17 kDa
Gene Name:	transforming growth factor alpha
Database Link:	<a href="#">Entrez Gene 7039 Human P01135</a>



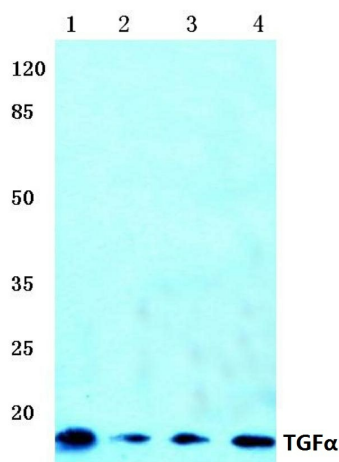
[View online »](#)

**Background:**

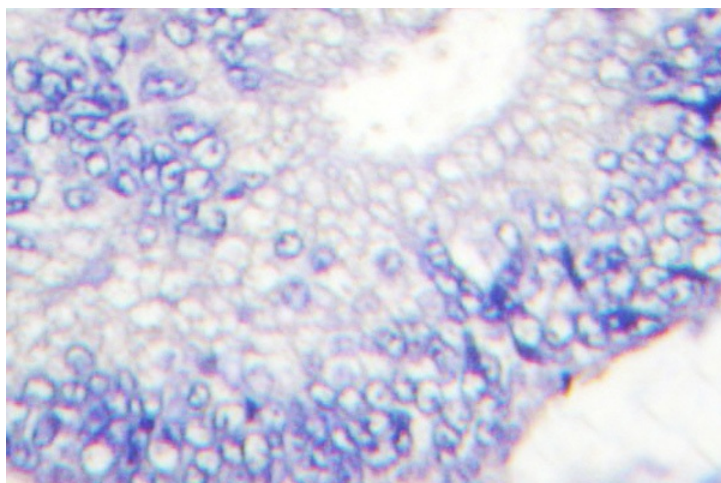
Transforming growth factor alpha (TGFalpha) is an acid- and heat-stable 50 amino acid protein originally found in rodents and humans. TGFalpha is 33% homologous at the amino acid level to epidermal growth factor (EGF). TGFalpha binds to the EGF receptor, mediates tyrosine phosphorylation of the receptor and promotes anchorage-independent growth of normal rat fibroblasts in soft agar in the presence of transforming growth factor beta. TGFalpha is secreted by a variety of transformed cells and tumors, embryonic cells and some normal adult cells. TGFalpha bioactivity has been found in the urine of cancer patients. It has been suggested that it may act as an autocrine growth factor for the induction or maintenance of malignancy.

**Synonyms:**

Transforming growth factor alpha, ETGF

**Product images:**


Western blot (WB) analysis of TGFα antibody at 1/500 dilution Lane 1: HEK293T whole cell lysate Lane 2: Mouse kidney tissue lysate Lane 3: Mouse liver tissue lysate Lane 4: Rat kidney tissue lysate



Immunohistochemistry (IHC) analyzes of TGFα antibody in paraffin-embedded human colon carcinoma tissue.