

## Product datasheet for **AP06338PU-N**

### alpha Synuclein (SNCA) (pan) Rabbit Polyclonal Antibody

#### Product data:

Product Type:	Primary Antibodies
Applications:	IHC, WB
Recommended Dilution:	<b>Western blot:</b> 1/500-1/1000. <b>Immunohistochemistry on paraffin sections:</b> 1/50-1/200.
Reactivity:	Human, Mouse, Rat
Host:	Rabbit
Clonality:	Polyclonal
Immunogen:	Synthetic peptide, corresponding to amino acids N-terminus of 19-30 Synuclein- $\alpha$ .
Specificity:	This antibody detects endogenous levels of Synuclein-pan protein. (region surrounding Ala19)
Formulation:	Phosphate buffered saline (PBS), pH 7.2. State: Aff - Purified State: Liquid purified Ig fraction Preservative: 0.05% sodium azide
Concentration:	1.0 mg/ml
Purification:	Affinity-chromatography using epitope-specific immunogen and the purity is > 95% (by SDS-PAGE)
Conjugation:	Unconjugated
Storage:	Store undiluted at 2-8°C for one month or (in aliquots) at -20°C for longer. Avoid repeated freezing and thawing.
Stability:	Shelf life: one year from despatch.
Predicted Protein Size:	~ 18 kDa
Gene Name:	synuclein alpha
Database Link:	<a href="#">Entrez Gene 20617 Mouse</a> <a href="#">Entrez Gene 29219 Rat</a> <a href="#">Entrez Gene 6622 Human P37840</a>



[View online »](#)

**Background:**

Alpha Synuclein is implicated in the regulation of dopamine release and transport. It is a soluble protein, expressed principally in the brain but also expressed in low concentrations in all tissues examined (except liver). In the nervous system, alpha Synuclein is primarily located at presynaptic terminals and is found membrane bound in dopaminergic neurons. It can form filamentous aggregates that are the major non amyloid component of intracellular inclusions in several neurodegenerative diseases (synucleinopathies), including Parkinson's Disease. Alpha Synuclein induces fibrillization of microtubule associated protein tau and reduces neuronal responsiveness to various apoptotic stimuli, leading to a decreased caspase 3 activation. Alpha synuclein is a protein phosphorylated predominantly on serine residues.

**Synonyms:**

alpha-synuclein; MGC110988; NACP; OTTHUMP00000161559; OTTHUMP00000161561; PARK1; PARK4; PD1

**Protein Families:**

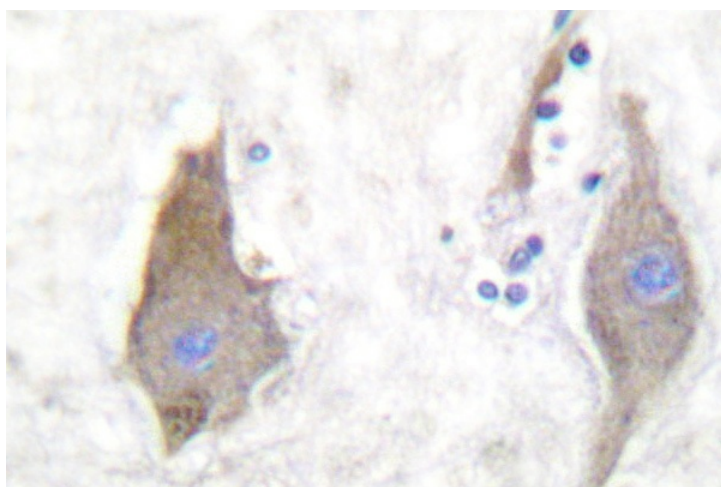
Druggable Genome

**Protein Pathways:**

Alzheimer's disease, Parkinson's disease

**Product images:**

Western blot (WB) analysis of Synuclein-pan antibody in extracts from LOVO cells.



Immunohistochemistry (IHC) analyzes of Synuclein-pan antibody in paraffin-embedded human brain tissue.