

Product datasheet for **AP06337PU-M**

beta Synuclein (SNCB) Rabbit Polyclonal Antibody

Product data:

Product Type:	Primary Antibodies
Applications:	IF, IHC, WB
Recommended Dilution:	Western blot: 1/500-1/1000. Immunohistochemistry on paraffin sections: 1/50-1/200. Immunofluorescence: 1/50-1/200.
Reactivity:	Human, Mouse, Rat
Host:	Rabbit
Clonality:	Polyclonal
Immunogen:	Synthetic peptide, corresponding to amino acids 82-140 of Human Synuclein- β .
Specificity:	This antibody detects endogenous levels of Synuclein beta protein. (region surrounding Ser118)
Formulation:	Phosphate buffered saline (PBS), pH 7.2. State: Aff - Purified State: Liquid purified Ig fraction Preservative: 0.05% sodium azide
Concentration:	1.0 mg/ml
Purification:	Affinity-chromatography using epitope-specific immunogen and the purity is > 95% (by SDS-PAGE)
Conjugation:	Unconjugated
Storage:	Store undiluted at 2-8°C for one month or (in aliquots) at -20°C for longer. Avoid repeated freezing and thawing.
Stability:	Shelf life: one year from despatch.
Predicted Protein Size:	~ 14 kDa
Gene Name:	synuclein beta
Database Link:	Entrez Gene 6620 Human Q16143



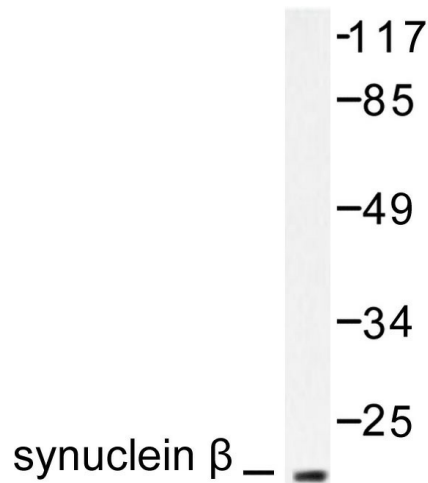
[View online »](#)

Background:

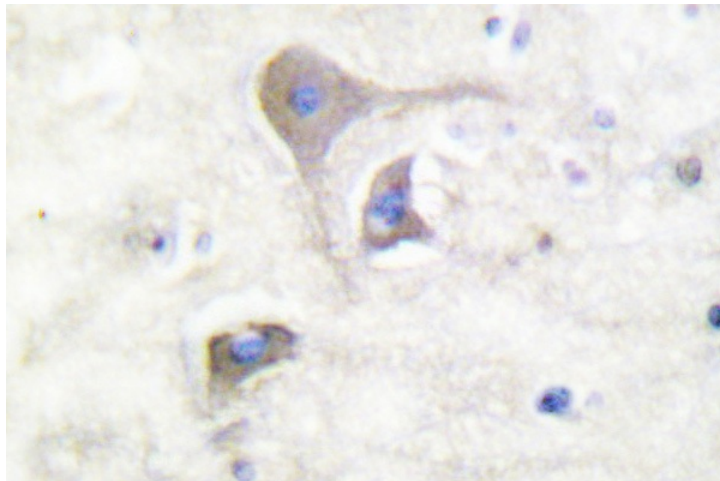
The synuclein family members, including alpha-synuclein (also designated NACP for non-beta amyloid component) and beta-synuclein, are predominantly expressed in the brain and are speculated to be involved in synaptic regulation and neuronal plasticity. alpha-synuclein is localized to neuronal cell bodies and synapses. alpha-synuclein was first identified as a component of Alzheimers disease amyloid plaques. Abnormal platelet function in Alzheimers disease has been demonstrated. During megakaryocytic differentiation alpha-synuclein was found to be upregulated, while beta-synuclein is downregulated, indicating that coordinate expression of synucleins may be important during hematopoietic cell differentiation. A mutant form of alpha-synuclein has been found in patients with early onset Parkinsons disease.

Synonyms:

Synuclein beta

Product images:


Western blot (WB) analysis of Synuclein β antibody in extracts from HeLa cells.



Immunohistochemistry (IHC) analysis of Synuclein β antibody in paraffin-embedded human brain tissue.