

## Product datasheet for **AP06336PU-N**

### **SYK Rabbit Polyclonal Antibody**

#### **Product data:**

Product Type:	Primary Antibodies
Applications:	IHC, WB
Recommended Dilution:	<b>Western blot:</b> 1/500-1/1000. <b>Immunohistochemistry on paraffin sections:</b> 1/50-1/200.
Reactivity:	Human, Mouse, Rat
Host:	Rabbit
Clonality:	Polyclonal
Immunogen:	Synthetic peptide, corresponding to amino acids 500-550 of Human Syk.
Specificity:	This antibody detects endogenous levels of SYK protein. (region surrounding Leu519)
Formulation:	Phosphate buffered saline (PBS), pH 7.2. State: Aff - Purified State: Liquid purified Ig fraction Preservative: 0.05% sodium azide
Concentration:	1.0 mg/ml
Purification:	Affinity-chromatography using epitope-specific immunogen and the purity is > 95% (by SDS-PAGE)
Conjugation:	Unconjugated
Storage:	Store undiluted at 2-8°C for one month or (in aliquots) at -20°C for longer. Avoid repeated freezing and thawing.
Stability:	Shelf life: one year from despatch.
Predicted Protein Size:	~ 72 kDa
Gene Name:	spleen tyrosine kinase
Database Link:	<a href="#">Entrez Gene 6850 Human P43405</a>



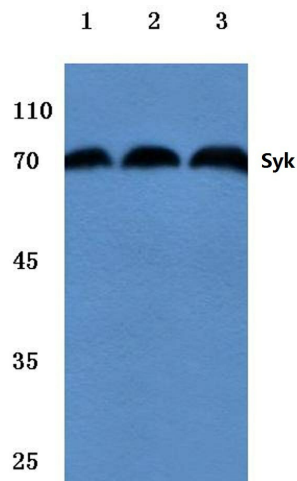
[View online »](#)

**Background:**

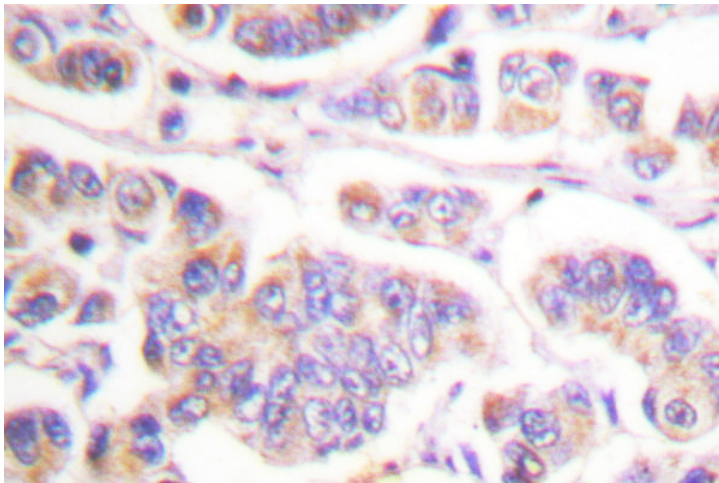
Syk (spleen tyrosine kinase) is a 635 amino acid protein that contains one protein kinase domain and two SH2 domains. One of several members of the protein kinase superfamily, Syk functions as a positive effector of B cell antigen receptor (CD79)-stimulated responses, coupling CD79 with the movement of one calcium ion through one of two phospho-regulated pathways. Via its ability to influence CD79 activity and to control the movement of calcium through the cell, Syk plays an important role in a variety of cellular responses, including differentiation, phagocytosis, proliferation and B cell development. Syk expression is upregulated in T cell lymphoma, suggesting a possible role for Syk in tumorigenesis. Two isoforms of Syk, designated short and long, exist due to alternative splicing events.

**Synonyms:**

Tyrosine-protein kinase SYK, Spleen tyrosine kinase

**Product images:**

Western blot (WB) analysis of Syk antibody at 1/500 dilution Lane 1:Hela whole cell lysate Lane 2:Raw264.7 whole cell lysate Lane 3:Rat kidney tissue lysate



Immunohistochemistry (IHC) analyzes of SYK antibody in paraffin-embedded human breast carcinoma tissue.