

Product datasheet for **AP06328PU-M**

STAT3 Rabbit Polyclonal Antibody

Product data:

| | |
|-------------------------|---|
| Product Type: | Primary Antibodies |
| Applications: | ELISA, IHC, WB |
| Recommended Dilution: | Western blot: 1/500-1/1000. Immunohistochemistry on paraffin sections: 1/50-1/200. Immunofluorescence: 1/50-1/200. |
| Reactivity: | Human, Mouse, Rat |
| Host: | Rabbit |
| Clonality: | Polyclonal |
| Immunogen: | Synthetic peptide, corresponding to amino acids 700-750 of Human Stat3. |
| Specificity: | This antibody detects endogenous levels of STAT3 protein. (region surrounding Thr721) |
| Formulation: | Phosphate buffered saline (PBS), pH 7.2. State: Aff - Purified State: Liquid purified Ig fraction Preservative: 15 mM sodium azide |
| Concentration: | 1.0 mg/ml |
| Purification: | Affinity-chromatography using epitope-specific immunogen and the purity is > 95% (by SDS-PAGE) |
| Conjugation: | Unconjugated |
| Storage: | Store undiluted at 2-8°C for one month or (in aliquots) at -20°C for longer. Avoid repeated freezing and thawing. |
| Stability: | Shelf life: one year from despatch. |
| Predicted Protein Size: | ~ 88 kDa |
| Gene Name: | signal transducer and activator of transcription 3 |
| Database Link: | Entrez Gene 6774 Human P40763 |



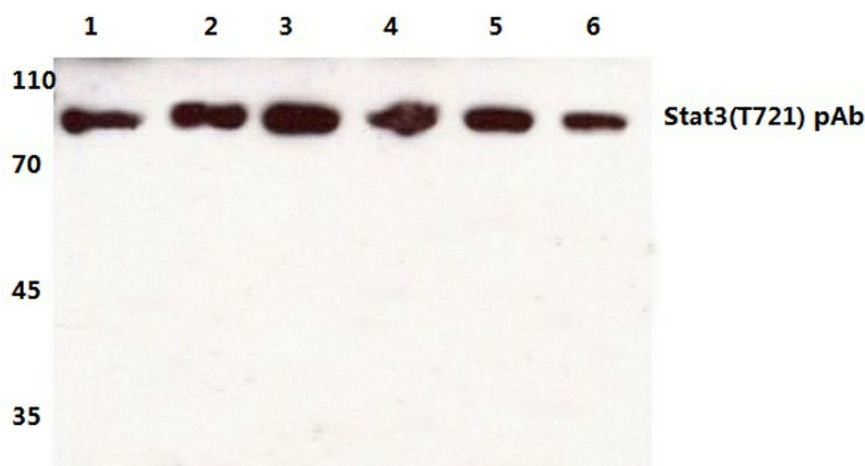
[View online »](#)

Background:

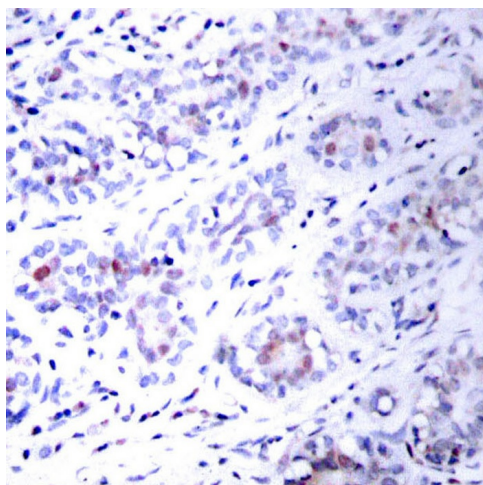
Membrane receptor signaling by various ligands, including interferons and growth hormones such as EGF, induces activation of Jak kinases which then leads to tyrosine phosphorylation of the various Stat transcription factors. Stat1 and Stat2 are induced by IFN- α and form a heterodimer which is part of the ISGF3 transcription factor complex. Although early reports indicate Stat3 activation by EGF and IL-6, it has been shown that Stat3 β appears to be activated by both while Stat3 α is activated by EGF, but not by IL-6. Highest expression of Stat4 is seen in testis and myeloid cells. IL-12 has been identified as an activator of Stat4. Stat5 has been shown to be activated by prolactin and by IL-3. Stat6 is involved in IL-4 activated signaling pathways.

Synonyms:

STAT-3, Acute-phase response factor, APRF

Product images:


Western blot (WB) analysis of Stat3 antibody at 1/500 dilution Lane 1: A549 whole cell lysate Lane 2: LO2 whole cell lysate treated with UV Lane 3: INH-3T3 whole cell lysate Lane 4: sp2/0 whole cell lysate treated with H2O2 Lane 5: PC12 whole cell lysate Lane 6: H9C2 whole cell lysate



Immunohistochemistry (IHC) analyzes of STAT3 antibody in paraffin-embedded human breast carcinoma tissue.