

## Product datasheet for **AP06325PU-M**

### STAT1 Rabbit Polyclonal Antibody

#### Product data:

Product Type:	Primary Antibodies
Applications:	IHC, IP, WB
Recommended Dilution:	<b>Western blot:</b> 1/500-1/1000. <b>Immunohistochemistry on paraffin sections:</b> 1/50-1/200. <b>Immunoprecipitation:</b> 1/50-1/200.
Reactivity:	Human, Mouse, Rat
Host:	Rabbit
Clonality:	Polyclonal
Immunogen:	Synthetic peptide, corresponding to amino acids 680-720 of Human Stat1.
Specificity:	This antibody detects endogenous levels of STAT1 protein. (region surrounding Gly695)
Formulation:	Phosphate buffered saline (PBS), pH 7.2. State: Aff - Purified State: Liquid purified Ig fraction (> 95% pure by SDS-PAGE) Preservative: 0.05% sodium azide
Concentration:	1.0 mg/ml
Purification:	Affinity-chromatography using epitope-specific immunogen and the purity is > 95% (by SDS-PAGE)
Conjugation:	Unconjugated
Storage:	Store undiluted at 2-8°C for one month or (in aliquots) at -20°C for longer. Avoid repeated freezing and thawing.
Stability:	Shelf life: one year from despatch.
Predicted Protein Size:	~ 87 kDa
Gene Name:	signal transducer and activator of transcription 1
Database Link:	<a href="#">Entrez Gene 6772 Human P42224</a>

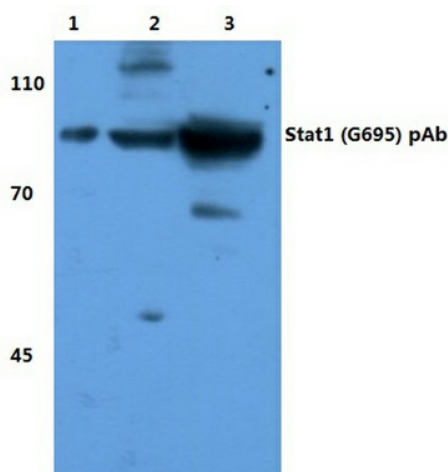
[View online »](#)

**Background:**

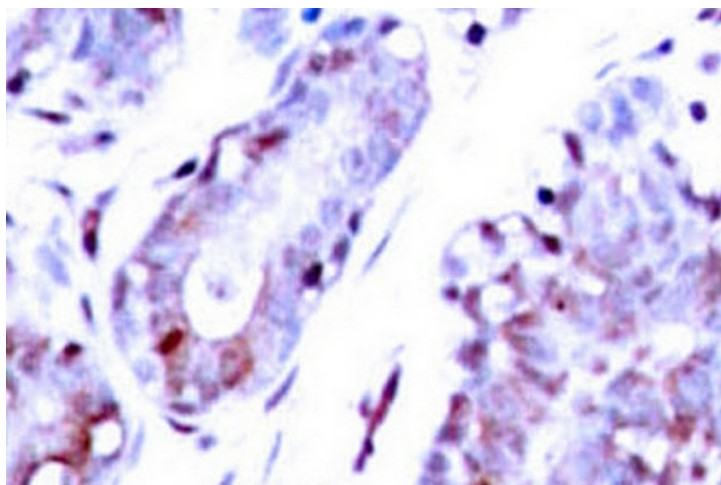
Signal transducer and activator of transcription that mediates signaling by interferons (IFNs). Following type I IFN (IFN-alpha and IFN-beta) binding to cell surface receptors, Jak kinases (TYK2 and JAK1) are activated, leading to tyrosine phosphorylation of STAT1 and STAT2. The phosphorylated STATs dimerize, associate with ISGF3G/IRF-9 to form a complex termed ISGF3 transcription factor, that enters the nucleus. ISGF3 binds to the IFN stimulated response element (ISRE) to activate the transcription of interferon stimulated genes, which drive the cell in an antiviral state. In response to type II IFN (IFN-gamma), STAT1 is tyrosine- and serine-phosphorylated. It then forms a homodimer termed IFN-gamma-activated factor (GAF), migrates into the nucleus and binds to the IFN gamma activated sequence (GAS) to drive the expression of the target genes, inducing a cellular antiviral state.

**Synonyms:**

DKFZp686B04100; ISGF-3; OTTHUMP00000205845; STAT91

**Product images:**


Western blot (WB) analysis of Stat1 antibody (Cat.-No.: [AP06325PU-N]) at 1/500 dilution  
Lane 1: Hela cell lysate treated with IFN-alpha  
Lane 2: Hela cell lysate treated with IFN-gamma



Immunohistochemistry (IHC) analyzes of STAT1 antibody (Cat.-No.: [AP06325PU-N]) in paraffin-embedded human breast carcinoma tissue.