

## Product datasheet for **AP06324PU-M**

### Serum Response Factor (SRF) Rabbit Polyclonal Antibody

#### Product data:

Product Type:	Primary Antibodies
Applications:	IHC, WB
Recommended Dilution:	<b>Western blot:</b> 1/500-1/1000. <b>Immunohistochemistry on paraffin sections:</b> 1/50-1/200.
Reactivity:	Human, Mouse, Rat
Host:	Rabbit
Clonality:	Polyclonal
Immunogen:	Synthetic peptide, corresponding to amino acids 61-110 of Human SRF.
Specificity:	This antibody detects endogenous levels of SRF protein. (region surrounding Gly93)
Formulation:	Phosphate buffered saline (PBS), pH 7.2. State: Aff - Purified State: Liquid purified Ig fraction Preservative: 15 mM sodium azide
Concentration:	1.0 mg/ml
Purification:	Affinity-chromatography using epitope-specific immunogen and the purity is > 95% (by SDS-PAGE)
Conjugation:	Unconjugated
Storage:	Store undiluted at 2-8°C for one month or (in aliquots) at -20°C for longer. Avoid repeated freezing and thawing.
Stability:	Shelf life: one year from despatch.
Predicted Protein Size:	~ 58 kDa
Gene Name:	serum response factor
Database Link:	<a href="#">Entrez Gene 20807 Mouse</a> <a href="#">Entrez Gene 501099 Rat</a> <a href="#">Entrez Gene 6722 Human</a> <a href="#">P11831</a>



[View online »](#)

**Background:**

Serum response factor (SRF) is a transcription factor that binds the serum response element (SRE), a sequence that mediates the transient response of many cellular genes to growth stimulation. SRF-binding sites are also constitutive promotor elements in many muscle-specific promoters. At the c-Fos SRE, formation of a ternary complex containing SRF and its accessory protein p62TCF appears to be important for signal transduction. Two related Ets domain proteins, Elk-1 and SRF accessory protein-1 (SAP-1) have DNA binding properties identical to that of p62TCF. Elk-1 and SAP-1 contain two homologous regions of which the two amino-terminal regions, the Ets domain (box A) and the B box, mediate ternary complex formation with SRF.

**Synonyms:**

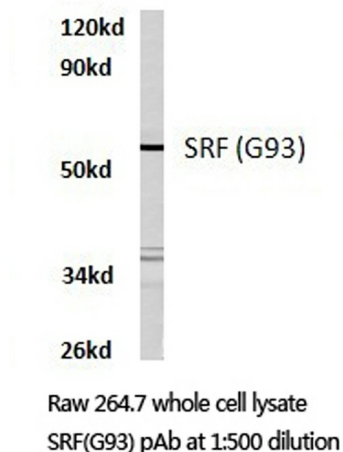
ELK3; ERP; MCM1; SAP2

**Protein Families:**

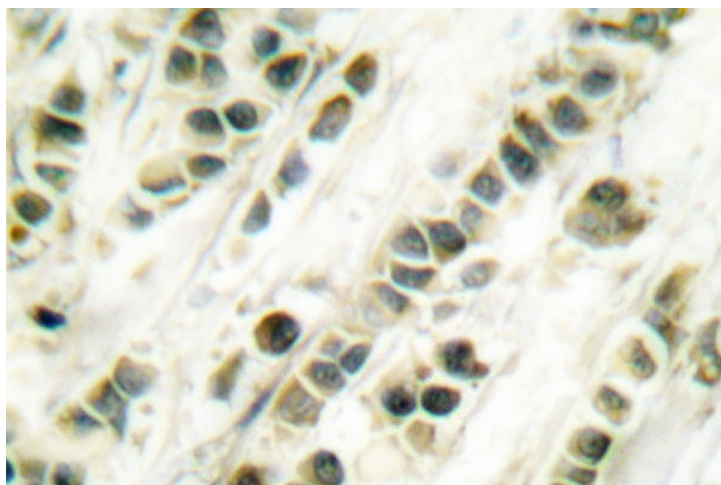
Druggable Genome, Transcription Factors

**Protein Pathways:**

MAPK signaling pathway

**Product images:**


Western blot (WB) analysis of SRF antibody in extracts from RAW264.7 cells.



Immunohistochemistry (IHC) analyzes of SRF antibody in paraffin-embedded human breast carcinoma tissue.