

Product datasheet for **AP06323PU-M**

SRC Rabbit Polyclonal Antibody

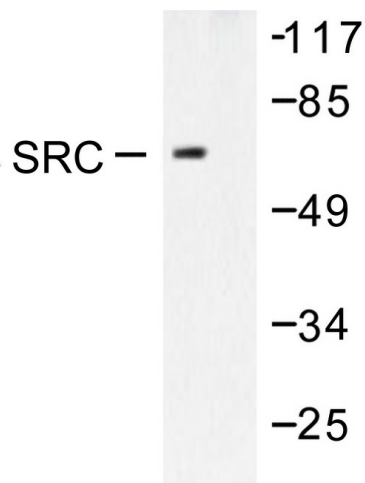
Product data:

Product Type:	Primary Antibodies
Applications:	IF, IHC, WB
Recommended Dilution:	Western blot: 1/500-1/1000. Immunofluorescence: 150-1/200. Immunohistochemistry on Paraffin Sections: 1/50-1/200.
Reactivity:	Human, Mouse, Rat
Host:	Rabbit
Clonality:	Polyclonal
Immunogen:	Synthetic peptide, corresponding to amino acids 390-430 of Human c-Src.
Specificity:	This antibody detects endogenous levels of Src protein. (region surrounding Ala420)
Formulation:	Phosphate buffered saline (PBS), pH~7.2 State: Aff - Purified State: Liquid purified Ig fraction (> 95% pure by SDS-PAGE) Preservative: 0.05% Sodium Azide
Concentration:	1.0 mg/ml
Purification:	Affinity Chromatography using epitope-specific immunogen
Conjugation:	Unconjugated
Storage:	Store undiluted at 2-8°C for one month or (in aliquots) at -20°C for longer. Avoid repeated freezing and thawing.
Stability:	Shelf life: one year from despatch.
Predicted Protein Size:	~60 kDa
Gene Name:	SRC proto-oncogene, non-receptor tyrosine kinase
Database Link:	Entrez Gene 20779 Mouse Entrez Gene 83805 Rat Entrez Gene 6714 Human P12931

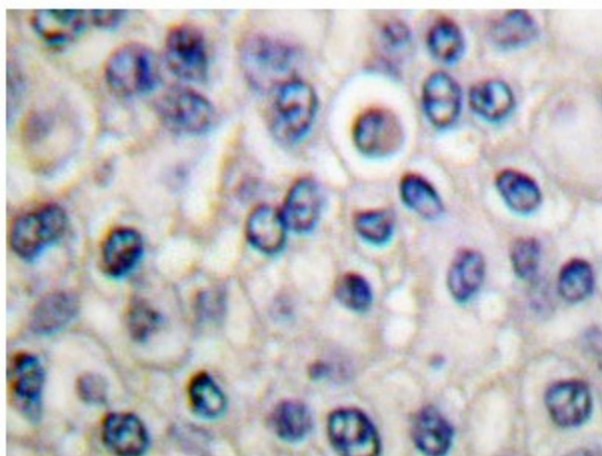


[View online »](#)

Background:	The major translational products of each of the eight members of the Src gene family identified to date are membrane-associated tyrosine protein kinases that lack transmembrane and external amino acid sequences, thereby distinguishing this group from the receptor class of tyrosine kinases. Members of this group include c-Src, c-Yes, Fyn, Lck, Lyn, Blk and c-Fgr. The major Src gene encoded protein, c-Src (also designated pp60Src, Src p60 and proto-oncogene tyrosine protein kinase Src) is expressed in a broad range of tissue and cell types, although the highest levels of c-Src are detected in neuronal tissues and platelets. c-Src may play a role in events associated with both neuronal differentiation and maintenance of mature neuronal cell functions.
Synonyms:	c-Src, pp60c-src
Protein Families:	Druggable Genome, ES Cell Differentiation/IPS, Protein Kinase, Stem cell relevant signaling - JAK/STAT signaling pathway
Protein Pathways:	Adherens junction, Endocytosis, Epithelial cell signaling in Helicobacter pylori infection, ErbB signaling pathway, Focal adhesion, Gap junction, GnRH signaling pathway, Tight junction, VEGF signaling pathway

Product images:


Western blot analysis of Src antibody in extracts from 293 cells treated with PBS, 60mins.



Immunohistochemistry (IHC) analysis of c-Src antibody in paraffin-embedded breast carcinoma tissue.