

Product datasheet for **AP06317PU-M**

SKP2 (p45) Rabbit Polyclonal Antibody

Product data:

Product Type:	Primary Antibodies
Applications:	IHC, WB
Recommended Dilution:	Western blot: 1/500-1/1000. Immunohistochemistry on paraffin sections: 1/50-1/200. Immunofluorescence: 1/50-1/200.
Reactivity:	Human
Host:	Rabbit
Clonality:	Polyclonal
Immunogen:	Synthetic peptide, corresponding to amino acids 369-419 of Human Skp2 p45.
Specificity:	This antibody detects endogenous levels of SKP2/p45 protein. (region surrounding Pro399)
Formulation:	Phosphate buffered saline (PBS), pH 7.2. State: Aff - Purified State: Liquid purified Ig fraction Preservative: 0.05% sodium azide
Concentration:	1.0 mg/ml
Purification:	Affinity-chromatography using epitope-specific immunogen and the purity is > 95% (by SDS-PAGE)
Conjugation:	Unconjugated
Storage:	Store undiluted at 2-8°C for one month or (in aliquots) at -20°C for longer. Avoid repeated freezing and thawing.
Stability:	Shelf life: one year from despatch.
Predicted Protein Size:	~ 47 kDa
Gene Name:	S-phase kinase-associated protein 2, E3 ubiquitin protein ligase
Database Link:	Entrez Gene 6502 Human Q13309



[View online »](#)

Background:

The critical role that the family of regulatory proteins known as cyclins plays in eukaryotic cell cycle regulation is well established. The best characterized cyclin complex is the mitotic cyclin B/Cdc2 p34 kinase, the active component of MPF (maturation promoting factor). Cyclin A accumulates prior to cyclin B in the cell cycle, appears to be involved in control of S phase and has been shown to associate with cyclin dependent kinase 2 (Cdk2). In addition, cyclin A has been implicated in cell transformation and is found in complexes with E1A, transcription factors DP-1 and E2F, and retinoblastoma protein p110. Two cyclin A-Cdk2 complex binding proteins, Skp1 p19 and Skp2 p45, have been described. Although the Skps (S phase kinase-associated proteins) associate with the active cyclin A-Cdk2 complex, they do not exhibit any regulatory effects on the complex. Abolition of Skp2 p45 function by either microinjection of anti-p45 antibodies or addition of antisense oligonucleotides prevents entry into S phase of both normal and transformed cells.

Synonyms:

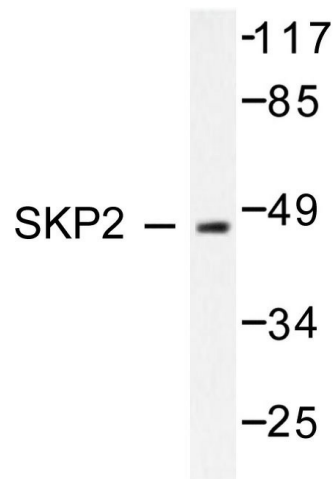
FBL1; FBXL1; FLB1; MGC1366; p45skp2

Protein Families:

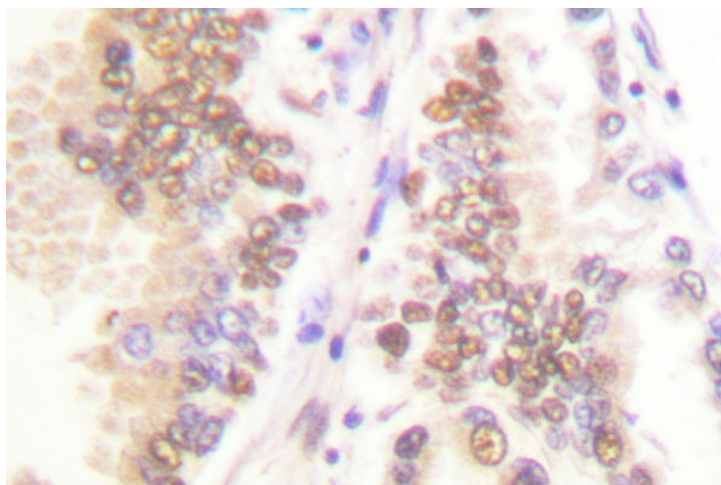
Druggable Genome

Protein Pathways:

Acute myeloid leukemia, Apoptosis, Cell cycle, Oocyte meiosis, p53 signaling pathway, Pathways in cancer, Progesterone-mediated oocyte maturation, Small cell lung cancer, Ubiquitin mediated proteolysis

Product images:


Western blot (WB) analysis of SKP2/p45 antibody in extracts from 293 cells.



Immunohistochemistry (IHC) analyzes of SKP2/p45 antibody in paraffin-embedded human lung carcinoma tissue.