

## Product datasheet for **AP06315PU-M**

### **SHP2 (PTPN11) Rabbit Polyclonal Antibody**

#### **Product data:**

Product Type:	Primary Antibodies
Applications:	IHC, WB
Recommended Dilution:	<b>Western blot:</b> 1/500-1/1000. <b>Immunohistochemistry on Paraffin sections:</b> 1/50-1/200.
Reactivity:	Human, Mouse, Rat
Host:	Rabbit
Clonality:	Polyclonal
Immunogen:	Synthetic peptide, corresponding to amino acids 320-370 of Human SHP-2.
Specificity:	This antibody detects endogenous levels of PTPN11 / PTP2C / SH-PTP2 protein (region surrounding Ser350).
Formulation:	Phosphate buffered saline (PBS), approx. pH 7.2. State: Aff - Purified State: Liquid purified Ig fraction Preservative: 15 mM Sodium azide
Concentration:	1.0 mg/ml
Purification:	Affinity-chromatography using epitope-specific immunogen (purity > 95% by SDS-PAGE)
Conjugation:	Unconjugated
Storage:	Store undiluted at 2-8°C for one month or (in aliquots) at -20°C for longer. Avoid repeated freezing and thawing.
Stability:	Shelf life: one year from despatch.
Predicted Protein Size:	~ 70 kDa
Gene Name:	protein tyrosine phosphatase, non-receptor type 11
Database Link:	<u><a href="#">Entrez Gene 19247 Mouse</a></u> <u><a href="#">Entrez Gene 25622 Rat</a></u> <u><a href="#">Entrez Gene 5781 Human</a></u> <u><a href="#">Q06124</a></u>



[View online »](#)

**Background:**

Several groups have independently identified a non-transmembrane PTP, designated SH-PTP1 (also known as PTP1C, HCP and SHP), which is primarily expressed in hematopoietic cells and characterized by the presence of two SH2 domains N-terminal to the PTP domain. SH2 domains generally mediate the association of regulatory molecules with specific phosphotyrosine-containing sites on autophosphorylated receptors, thereby controlling the initial interaction of receptors with these substrates. A second and much more widely expressed PTP with SH2 domains, SH-PTP2 (also designated PTP1D and Syp), has been identified. Strong sequence similarity between SH-PTP2 and the Drosophila gene corkscrew (CSW) and their similar patterns of expression suggest that SH-PTP2 is the human corkscrew homolog.

**Synonyms:**

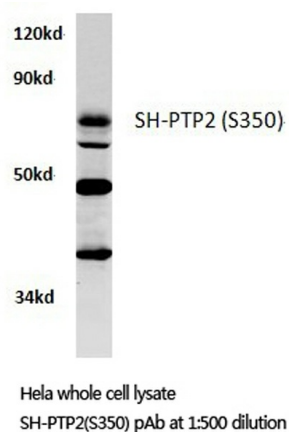
SHPTP2, PTP-1D, PTP-2C, SH-PTP2, SHP-2, Shp2, SH-PTP3

**Protein Families:**

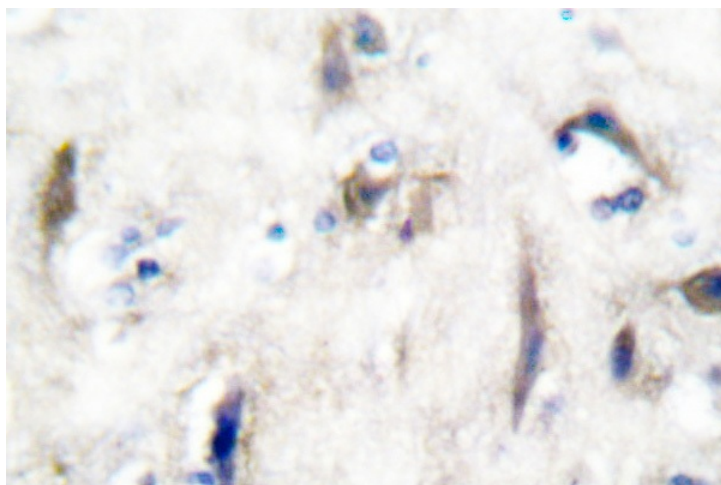
Druggable Genome, Phosphatase

**Protein Pathways:**

Adipocytokine signaling pathway, Chronic myeloid leukemia, Epithelial cell signaling in Helicobacter pylori infection, Jak-STAT signaling pathway, Leukocyte transendothelial migration, Natural killer cell mediated cytotoxicity, Neurotrophin signaling pathway, Renal cell carcinoma

**Product images:**


Western blot (WB) analysis of SH-PTP2 antibody in extracts from hela cells.



Immunohistochemical analysis in paraffin-embedded human brain tissue using PTPN11 / SH-PTP2 antibody.