

Product datasheet for **AP06310PU-M**

S100A1 Rabbit Polyclonal Antibody

Product data:

Product Type:	Primary Antibodies
Applications:	ELISA, IHC, WB
Recommended Dilution:	Western blot: 1/500-1/1000. Immunofluorescence: 1/50-1/200. Immunohistochemistry on Paraffin Sections: 1/50-1/200.
Reactivity:	Human, Mouse, Rat
Host:	Rabbit
Clonality:	Polyclonal
Immunogen:	Synthetic peptide, corresponding to the N-terminal of Human S100 α .
Specificity:	This antibody detects endogenous levels of S100A1 protein. (region surrounding Ala18)
Formulation:	Phosphate buffered saline (PBS), pH~7.2 State: Aff - Purified State: Liquid purified IgG fraction (> 95% pure by SDS-PAGE) Preservative: 0.05% Sodium Azide
Concentration:	1.0 mg/ml
Purification:	Affinity-Chromatography using epitope-specific immunogen
Conjugation:	Unconjugated
Storage:	Store undiluted at 2-8°C for one month or (in aliquots) at -20°C for longer . Avoid repeated freezing and thawing.
Stability:	Shelf life: one year from despatch.
Predicted Protein Size:	~ 10 kDa
Gene Name:	S100 calcium binding protein A1
Database Link:	Entrez Gene 6271 Human P23297



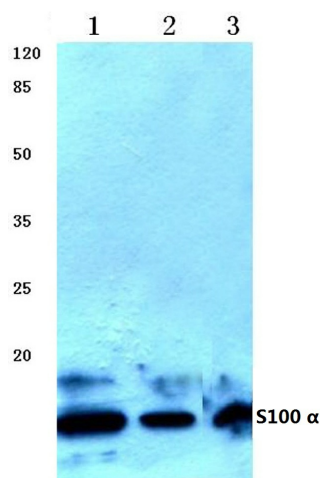
[View online »](#)

Background:

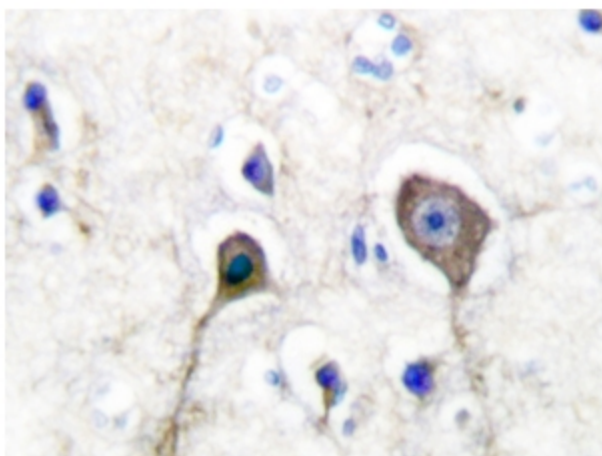
S100 calcium binding protein A1 (S100-alpha/ S100A1), it is a member of the S100 family of proteins containing 2 EF-hand calcium-binding motifs. S100 proteins are localized in the cytoplasm and/or nucleus of a wide range of cells, and involved in the regulation of a number of cellular processes such as cell cycle progression and differentiation. S100 genes include at least 13 members which are located as a cluster on chromosome 1q21. This protein may function in stimulation of Ca^{2+} -induced Ca^{2+} release, inhibition of microtubule assembly, and inhibition of protein kinase C-mediated phosphorylation. Reduced expression of this protein has been implicated in cardiomyopathies.

Synonyms:

S100-A1, S100A, S100 alpha, S100 calcium-binding protein A1, S-100 protein subunit alpha, S-100 protein alpha chain

Product images:


Western blot (WB) analysis of S100 a antibody at 1/500 dilution Lane 1:HEK293T whole cell lysate
Lane 2:Mouse brain tissue lysate Lane 3:Rat brain tissue lysate



Immunohistochemistry analysis of S100A1 antibody in paraffin-embedded human brain tissue.