

Product datasheet for **AP06309PU-S**

RIT1 Rabbit Polyclonal Antibody

Product data:

Product Type:	Primary Antibodies
Applications:	WB
Recommended Dilution:	Western blot: 1/500-1/1000.
Reactivity:	Human, Mouse
Host:	Rabbit
Clonality:	Polyclonal
Immunogen:	Synthetic peptide, corresponding to amino acids 170-220 of Human Rit1.
Specificity:	This antibody detects endogenous levels of ROC1 protein. (region surrounding Trp204)
Formulation:	Phosphate buffered saline (PBS), pH 7.2. State: Aff - Purified State: Liquid purified Ig fraction Preservative: 15 mM sodium azide
Concentration:	1.0 mg/ml
Purification:	Affinity-chromatography using epitope-specific immunogen and the purity is > 95% (by SDS-PAGE)
Conjugation:	Unconjugated
Storage:	Store undiluted at 2-8°C for one month or (in aliquots) at -20°C for longer. Avoid repeated freezing and thawing.
Stability:	Shelf life: one year from despatch.
Predicted Protein Size:	~ 25 kDa
Gene Name:	Ras like without CAAX 1
Database Link:	<u>Entrez Gene 6016 Human Q92963</u>

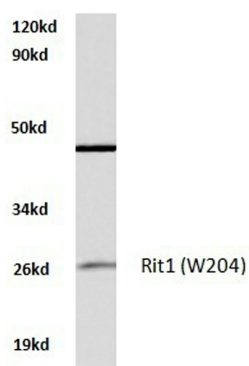
[View online »](#)

Background:

ROC 1 and ROC 2 are the two highly conserved RING finger proteins that are homologous to APC 11, a subunit of the anaphase promoting complex(APC). ROC 1 and ROC 2 commonly interact with all cullins while APC 11 specifically interacts with APC 2, a cullin related APC subunit. ROC 1 and APC 11 immunocomplexes can catalyze isopeptide ligations to form polyubiquitin chains in an E1 and E2 dependent manner. ROC 1 is thought to play a unique role in the ubiquitination reaction by heterodimerizing with cullin 1 to catalyze ubiquitin polymerization.

Synonyms:

RIBB, RIT, ROC1

Product images:


A549 whole cell lysate
Rit1 (W204) pAb at 1:500 dilution

Western blot (WB) analysis of ROC1 antibody in extracts from A549 cells.