

Product datasheet for **AP06306PU-N**

c Rel (REL) Rabbit Polyclonal Antibody

Product data:

Product Type:	Primary Antibodies
Applications:	IHC, WB
Recommended Dilution:	Western blot: 1/500-1/1000. Immunohistochemistry on paraffin sections 1/50-1/200.
Reactivity:	Human
Host:	Rabbit
Clonality:	Polyclonal
Immunogen:	Synthetic peptide, corresponding to amino acids 470-520 of Human c-Rel.
Specificity:	This antibody detects endogenous levels of Rel protein. (region surrounding asn497)
Formulation:	Phosphate buffered saline (PBS), pH 7.2. State: Aff - Purified State: Liquid purified Ig fraction Preservative: 0.05% sodium azide
Concentration:	1.0 mg/ml
Purification:	Affinity-chromatography using epitope-specific immunogen and the purity is > 95% (by SDS-PAGE)
Conjugation:	Unconjugated
Storage:	Store undiluted at 2-8°C for one month or (in aliquots) at -20°C for longer. Avoid repeated freezing and thawing.
Stability:	Shelf life: one year from despatch.
Predicted Protein Size:	~ 68 to 78 kDa
Gene Name:	REL proto-oncogene, NF-kB subunit
Database Link:	Entrez Gene 5966 Human Q04864



[View online »](#)

Background:

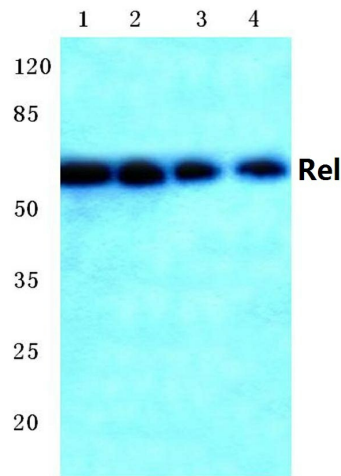
c-Rel is the cellular cognate of v-Rel, the avian reticuloendotheliosis virus strain T transforming gene. v-Rel encodes a phosphoprotein that is located in the cytoplasm of transformed spleen cells and in the nucleus of non-transformed fibroblasts, in contrast to the c-Rel protein, which is cytoplasmic. c-Rel has been shown to represent a constituent of the κ B site binding transcription factor NF κ B, which plays a crucial role in the expression of immunoglobulin κ light chain gene. In contrast to c-Rel, v-Rel is truncated in its C-terminal transactivation domain and does not appear to function as a transcriptional transactivator. It has thus been postulated that v-Rel may interfere with the normal transcription of NF κ B regulated genes and thus cause transformation by a mechanism analogous to v-ErbA, which binds to the thyroid hormoneresponsive region in certain erythroid genes needed for differentiation, but cannot be activated by thyroid hormone.

Synonyms:

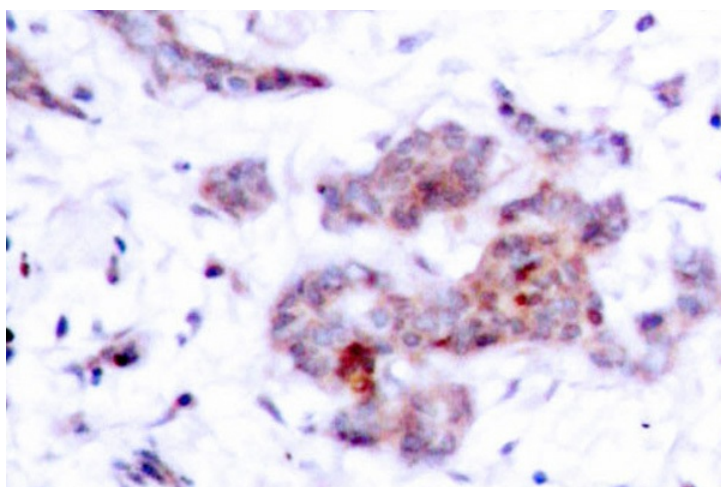
c-Rel

Protein Families:

Druggable Genome, Transcription Factors

Product images:

Western blot (WB) analysis of c-Rel antibody at 1/500 dilution Lane 1:Raw264.7 whole cell lysate Lane 2:Mouse heart tissue lysate Lane 3:Rat heart tissue lysate Lane 4:Rat brain tissue lysate



Immunohistochemistry (IHC) analyzes of Rel antibody in paraffin-embedded human breast carcinoma tissue.