

Product datasheet for **AP06299PU-N**

RAF1 Rabbit Polyclonal Antibody

Product data:

Product Type:	Primary Antibodies
Applications:	IHC, WB
Recommended Dilution:	Western blot: 1/500-1/1000. Immunohistochemistry on paraffin sections: 1/50-1/200.
Reactivity:	Human, Mouse, Rat
Host:	Rabbit
Clonality:	Polyclonal
Immunogen:	Synthetic peptide, corresponding to amino acids 211-260 of Human Raf-1.
Specificity:	This antibody detects endogenous levels of Raf1 protein. (region surrounding Gln253)
Formulation:	Phosphate buffered saline (PBS), pH 7.2. State: Aff - Purified State: Liquid purified Ig fraction Preservative: 0.05% sodium azide
Concentration:	1.0 mg/ml
Purification:	Affinity-chromatography using epitope-specific immunogen and the purity is > 95% (by SDS-PAGE)
Conjugation:	Unconjugated
Storage:	Store undiluted at 2-8°C for one month or (in aliquots) at -20°C for longer. Avoid repeated freezing and thawing.
Stability:	Shelf life: one year from despatch.
Predicted Protein Size:	~ 73 kDa
Gene Name:	Raf-1 proto-oncogene, serine/threonine kinase
Database Link:	Entrez Gene 5894 Human P04049



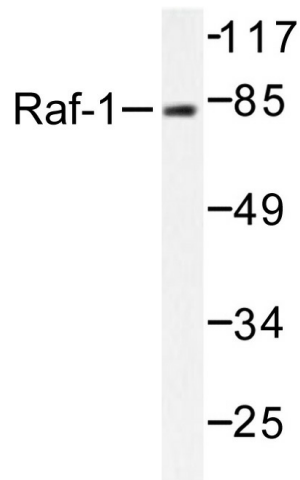
[View online »](#)

Background:

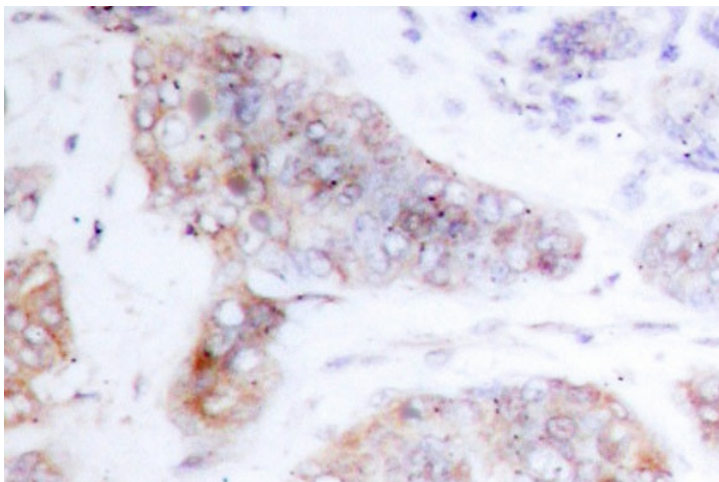
Several serine/threonine protein kinases have been implicated as intermediates in signal transduction pathways. These include ERK/MAP kinases, ribosomal S6 kinase (Rsk) and Raf-1. Raf-1 is a cytoplasmic protein with intrinsic serine/threonine activity. It is broadly expressed in nearly all cell lines tested to date and is the cellular homolog of v-Raf, the product of the transforming gene of the 3611 strain of murine sarcoma virus. The unregulated kinase activity of the v-Raf protein has been associated with transformation and mitogenesis, while the activity of Raf-1 is normally suppressed by a regulatory N-terminal domain. Raf-A, a second member of the Raf gene family of serine/ threonine protein kinases, exhibits substantial homology to Raf-1 within the kinase domain of the two molecules, but less homology elsewhere. Expression of Raf-B is highly restricted, with highest levels in the cerebrum and testis.

Synonyms:

C-RAF, Raf-1, cRaf

Product images:

Western blot (WB) analysis of Raf1 antibody in extracts from K562 MDA-MB-435 cells.



Immunohistochemistry (IHC) analyzes of Raf1 antibody in paraffin-embedded human breast carcinoma tissue.