

Product datasheet for **AP06294PU-N**

Prostate Specific Antigen (KLK3) Rabbit Polyclonal Antibody

Product data:

Product Type:	Primary Antibodies
Applications:	IF, IHC, WB
Recommended Dilution:	Western blot: 1/500-1/1000. Immunofluorescence 1/50-1/200. Immunohistochemistry on Paraffin Sections: 1/50-1/200.
Reactivity:	Human
Host:	Rabbit
Clonality:	Polyclonal
Immunogen:	Synthetic peptide, corresponding to amino acids 81-130 of Human PSA.
Specificity:	This antibody detects endogenous levels of Prostate-specific Antigen protein. (region surrounding Leu106)
Formulation:	Phosphate buffered saline (PBS), pH~7.2 State: Aff - Purified State: Liquid purified Ig fraction (> 95% pure by SDS-PAGE) Preservative: 0.05% Sodium Azide
Concentration:	1.0 mg/ml
Purification:	Affinity Chromatography using epitope-specific immunogen
Conjugation:	Unconjugated
Storage:	Store undiluted at 2-8°C for one month or (in aliquots) at -20°C for longer. Avoid repeated freezing and thawing.
Stability:	Shelf life: one year from despatch.
Predicted Protein Size:	~ 34 kDa
Gene Name:	kallikrein related peptidase 3
Database Link:	Entrez Gene 354 Human P07288



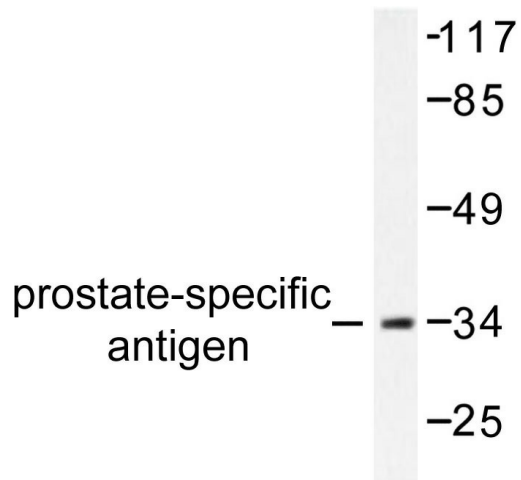
[View online »](#)

Background:

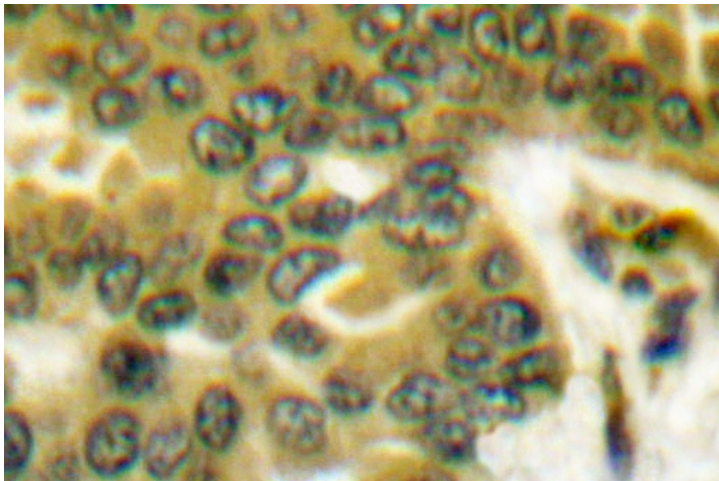
Prostate specific antigen (PSA), also designated γ -seminoprotein, seminin, p30 antigen, semenogelase and kallikrein 3 (KLK3), was first identified as a glycoprotein in human seminal plasma. PSA was determined by sequence similarity to be a member of the kallikrein subfamily of trypsin proteases. PSA is a serine protease that hydrolyzes the major human seminal protein, the seminal plasma mobility inhibitor precursor or semenogelin I (SPMIP or Sgl), which leads to semen liquification. PSA production and expression are highest in normal, benign hyperplastic and cancerous tissues of the prostate, although PSA has also been detected in accessory male sex glands and in breast cancer. PSA has been identified as an aid in the early detection of prostate cancer and is a commonly used tumor marker.

Synonyms:

Prostate-specific antigen, Semenogelase, Gamma-seminoprotein, P-30 antigen

Product images:

Western blot (WB) analysis of Prostate-specific antigen antibody in extracts from mouse heart.



Immunohistochemistry analysis of PSA antibody in paraffin-embedded Human prostate carcinoma tissue.