

## Product datasheet for **AP06293PU-M**

### PSCA Rabbit Polyclonal Antibody

#### Product data:

Product Type:	Primary Antibodies
Applications:	ELISA, WB
Recommended Dilution:	<b>Western blot:</b> 1/500-1/1000.
Reactivity:	Human, Mouse
Host:	Rabbit
Clonality:	Polyclonal
Immunogen:	Synthetic peptide, corresponding to amino acids 41-90 of Human PSCA.
Specificity:	This antibody detects endogenous levels of Prostate Stem Cell Antigen protein (PSCA). (region surrounding Val71)
Formulation:	PBS, pH~7.2 State: Aff - Purified State: Liquid purified Ig fraction (> 95% by SDS-PAGE). Preservative: 0.05% Sodium Azide
Concentration:	1.0 mg/ml
Purification:	Affinity Chromatography using epitope-specific immunogen.
Conjugation:	Unconjugated
Storage:	Store undiluted at 2-8°C for one month or (in aliquots) at -20°C for longer. Avoid repeated freezing and thawing.
Stability:	Shelf life: one year from despatch.
Predicted Protein Size:	~18 kDa
Gene Name:	prostate stem cell antigen
Database Link:	<a href="#">Entrez Gene 8000 Human O43653</a>



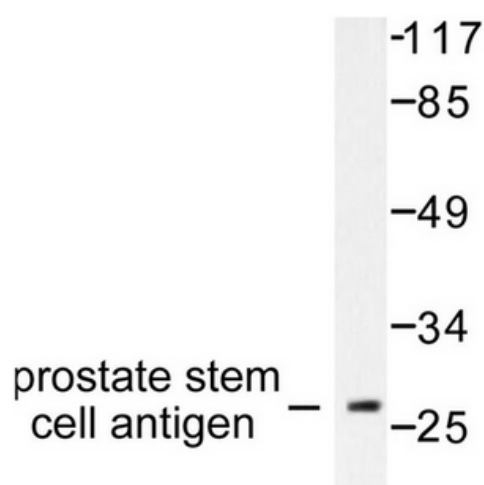
[View online »](#)

**Background:**

Prostate stem cell antigen (PSCA) is a 123 amino acid glycosylated protein that shares homology with the Thy-1/Ly-6 family of glycosyl-phosphatidylinositol (GPI)-anchored cell surface antigens. The PSCA gene maps to chromosome 8q24.2 and transcripts are most prevalent in prostate and placenta. The gene encoding c-myc is also located on chromosome 8q and like PSCA, is overexpressed in a large number of prostate cancers. Transcripts for PSCA are also abundant in urothelial tumors, and levels of PSCA transcripts increase in confluent RT112 bladder carcinomas, suggesting that PSCA is a marker for urothelial and gastric tissue carcinogenesis. Among prostate cancer cell surface antigens, PSCA is expressed in over 80% of prostate carcinomas and correlates well to certain prostate cancer phenotypes such as prostate cancer bone metastases.

**Synonyms:**

Prostate stem cell antigen

**Product images:**


Western blot analysis of Prostate Stem Cell Antigen antibody (Cat.-No.: [AP06293PU-N]) in extracts from HepG2 cells.