

Product datasheet for **AP06288PU-M**

PML Protein (PML) Rabbit Polyclonal Antibody

Product data:

| | |
|-------------------------|--|
| Product Type: | Primary Antibodies |
| Applications: | IF, IHC, WB |
| Recommended Dilution: | Western blot: 1/500-1/1000. Immunohistochemistry on paraffin sections 1/50-1/200. Immunofluorescence: 1/50-1/200. |
| Reactivity: | Human |
| Host: | Rabbit |
| Clonality: | Polyclonal |
| Immunogen: | Synthetic peptide, corresponding to the N-terminal of Human PML. |
| Specificity: | This antibody detects endogenous levels of PML protein. (region surrounding Pro39) |
| Formulation: | Phosphate buffered saline (PBS), pH~7.2 State: Aff - Purified State: Liquid purified Ig fraction (> 95% pure by SDS-PAGE). Preservative: 0.05% Sodium Azide |
| Concentration: | 1.0 mg/ml |
| Purification: | Affinity-chromatography using epitope-specific immunogen. |
| Conjugation: | Unconjugated |
| Storage: | Store undiluted at 2-8°C for one month or (in aliquots) at -20°C for longer. Avoid repeated freezing and thawing. |
| Stability: | Shelf life: One year from despatch. |
| Predicted Protein Size: | ~ 98 kDa |
| Gene Name: | promyelocytic leukemia |
| Database Link: | Entrez Gene 5371 Human P29590 |



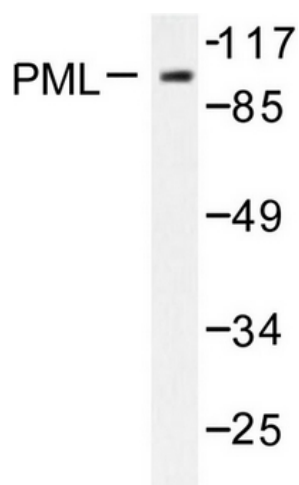
[View online »](#)

Background:

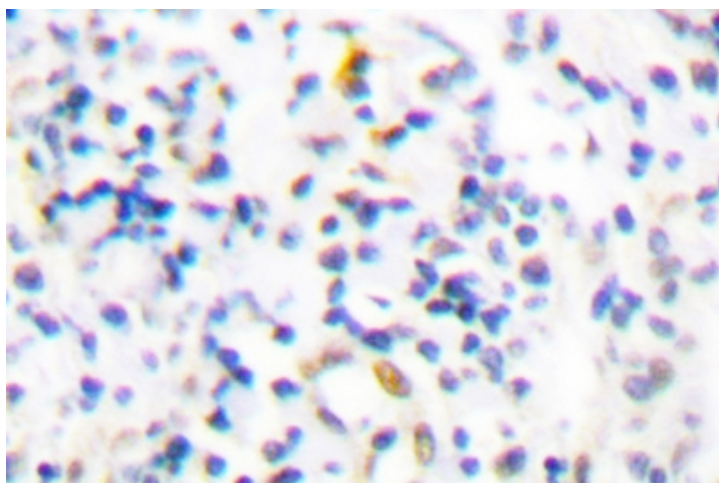
The PML protein is a zinc finger transcription factor expressed as three major transcription products due to alternative splicing. The gene encoding human PML maps to chromosome 15q22. The t(15;17) (q22;q11.2-q12) chromosomal trans-location of the retinoic acid receptor alpha (RARalpha) gene occurs in virtually all cases of acute promyelocytic leukemia and results in the expression of a PML/RARalpha chimeric protein. Myeloid precursor cells expressing the PML/ RARalpha chimera fail to differentiate and exhibit an increased growth rate consequent to diminished apoptosis. PML/RARalpha transforms myeloid precursors by recruiting the nuclear co-repressor (N-CoR)-histone deacetylase complex that is essential to retinoic acid-dependent myeloid differentiation. PML/ RARalpha also recruits DNA methyltransferases in order to induce gene hypermethylation and silencing, which ultimately facilitates leukemogenesis.

Synonyms:

RING finger protein 71, MYL, TRIM19

Product images:


Western blot (WB) analysis of PML antibody in extracts from A549 cells.



Immunohistochemistry (IHC) analyzes of PML antibody in paraffin-embedded human tonsil thyroid tissue.