

Product datasheet for **AP06285PU-M**

PGP9.5 (UCHL1) Rabbit Polyclonal Antibody

Product data:

Product Type:	Primary Antibodies
Applications:	IHC, WB
Recommended Dilution:	Western blot: 1/500-1/1000. Immunohistochemistry on paraffin sections 1/5-1/200.
Reactivity:	Human, Mouse, Rat
Host:	Rabbit
Clonality:	Polyclonal
Immunogen:	Synthetic peptide, corresponding to amino acids 171-220 of Human UCHL1.
Specificity:	This antibody detects endogenous levels of PGP9.5 protein. (region surrounding Arg202)
Formulation:	Phosphate buffered saline (PBS), pH 7.2 State: Aff - Purified State: Liquid purified Ig fraction (> 95% pure by SDS-PAGE). Preservative: 0.05% Sodium Azide
Concentration:	1.0 mg/ml
Purification:	Affinity Chromatography using epitope-specific immunogen.
Conjugation:	Unconjugated
Storage:	Store at 2-8°C for one month or (in aliquots) at -20°C for longer. Avoid repeated freeze thaw cycles!
Stability:	Shelf life: one year from despatch.
Predicted Protein Size:	~ 25 kDa
Gene Name:	ubiquitin C-terminal hydrolase L1
Database Link:	Entrez Gene 7345 Human P09936



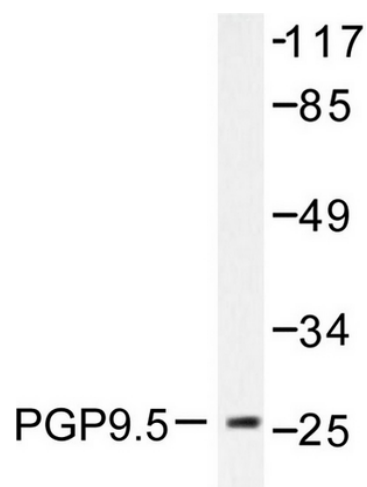
[View online »](#)

Background:

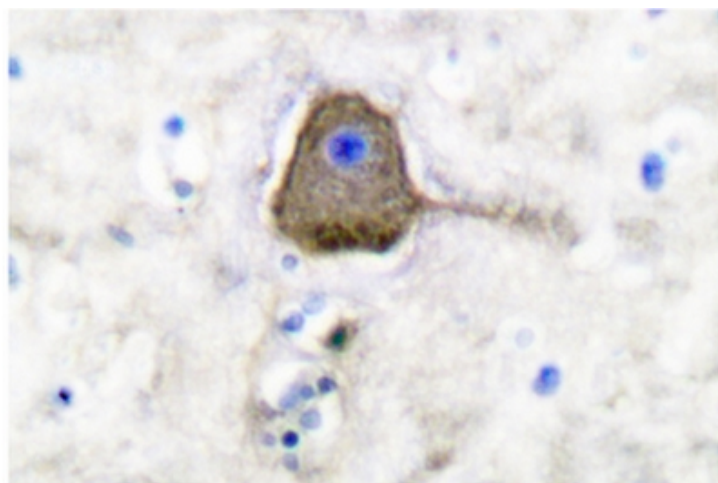
UCHL1 is a single chain transmembraneous glycoprotein which represents the low molecular weight isoform of the Leucocyte Common Antigen (LCA). It is expressed on most thymocytes, about 45% of peripheral blood T cells, virtually all T cells in skin reactive infiltrates, and the majority of T cell malignancies. It is also found on a subset of B cells and on exceptional B cell lymphomas.

Synonyms:

UCH-L1, PGP 9.5, Ubiquitin thioesterase L1, Neuron cytoplasmic protein 9.5

Product images:


Western blot (WB) analysis of PGP9.5 antibody in extracts from 293 cells.



Immunohistochemistry (IHC) analysis of PGP9.5 antibody in paraffin-embedded human brain tissue.