

Product datasheet for **AP06284PU-N**

Peripherin (PRPH) Rabbit Polyclonal Antibody

Product data:

Product Type:	Primary Antibodies
Applications:	IHC, WB
Recommended Dilution:	Western blot: 1/500-1/1000. Immunohistochemistry on Paraffin Sections: 1/50-1/200.
Reactivity:	Human, Rat, Mouse
Host:	Rabbit
Clonality:	Polyclonal
Immunogen:	Synthetic peptide, corresponding to amino acids 430-480 of Human PRPH.
Specificity:	This antibody detects endogenous levels of Peripherin protein. (region surrounding Ser454)
Formulation:	PBS. pH 7.2 State: Aff - Purified State: Liquid purified Ig fraction (> 95% pure by SDS-PAGE) Stabilizer: 50 % Glycerol Preservative: 0.02 % Sodium Azide
Concentration:	1.0 mg/ml
Purification:	Affinity Chromatography using epitope-specific immunogen
Conjugation:	Unconjugated
Storage:	Store undiluted at 2-8°C for one month or (in aliquots) at -20°C for longer. Avoid repeated freezing and thawing.
Stability:	Shelf life: One year from despatch.
Predicted Protein Size:	~55 kDa
Gene Name:	peripherin
Database Link:	Entrez Gene 5630 Human P41219



[View online »](#)

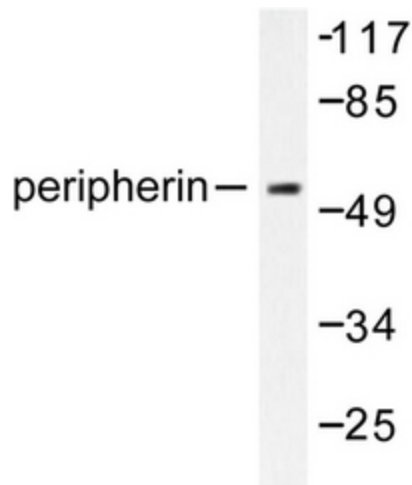
Background:

Peripherin is a type III intermediate filament protein that is expressed in peripheral and some central nervous system (CNS) neurons. Peripherin activation is known to be induced by leukemia inhibitory factor (LIF). LIF activates Peripherin by inducing members of STAT transcription factor family to bind to a specific promoter element in the Peripherin gene. IL-6 is also known to induce Peripherin expression. Although it is not essential for neurite formation, peripherin is necessary for cellular intermediate filament network formation. Peripherin, unlike most intermediate filament proteins, has been reported to be modified by tyrosine phosphorylation.

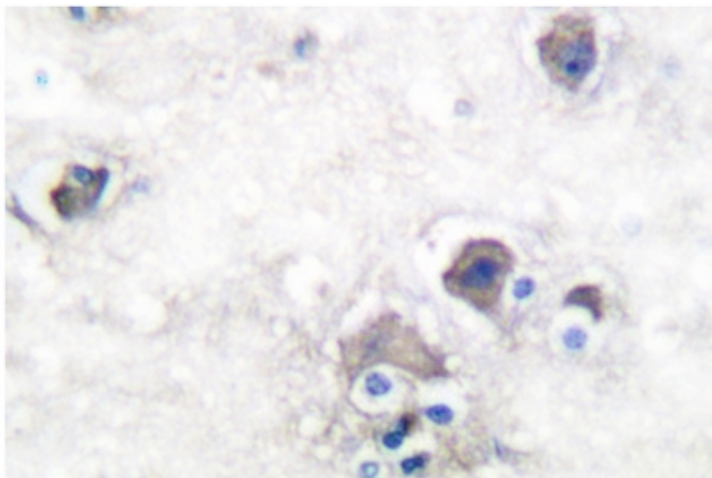
Synonyms:

PRPH, NEF4, PRPH1

Product images:



Western blot analysis of Peripherin antibody in extracts from HepG2 cells.



Immunohistochemistry analyzes of Peripherin antibody in paraffin-embedded human brain tissue.