

## Product datasheet for **AP06282PU-M**

### PDGF beta (PDGFB) Rabbit Polyclonal Antibody

#### Product data:

Product Type:	Primary Antibodies
Applications:	IHC, WB
Recommended Dilution:	<b>Western blot:</b> 1/500-1/1000. <b>Immunohistochemistry on paraffin sections</b> 1/50-1/200.
Reactivity:	Human, Mouse, Rat
Host:	Rabbit
Clonality:	Polyclonal
Immunogen:	Synthetic peptide, corresponding to amino acids 21-70 of Human PDGF-B.
Specificity:	This antibody detects endogenous levels of PDGFB protein. (region surrounding Leu48)
Formulation:	Phosphate buffered saline (PBS), pH 7.2 State: Aff - Purified State: Liquid purified Ig fraction (> 95% pure by SDS-PAGE). Preservative: 0.05% Sodium Azide
Concentration:	1.0 mg/ml
Purification:	Affinity Chromatography using epitope-specific immunogen.
Conjugation:	Unconjugated
Storage:	Store at 2-8°C for one month or (in aliquots) at -20°C for longer. Avoid repeated freeze thaw cycles!
Stability:	Shelf life: one year from despatch.
Predicted Protein Size:	~ 27 kDa
Gene Name:	platelet derived growth factor subunit B
Database Link:	<u><a href="#">Entrez Gene 5155 Human P01127</a></u>

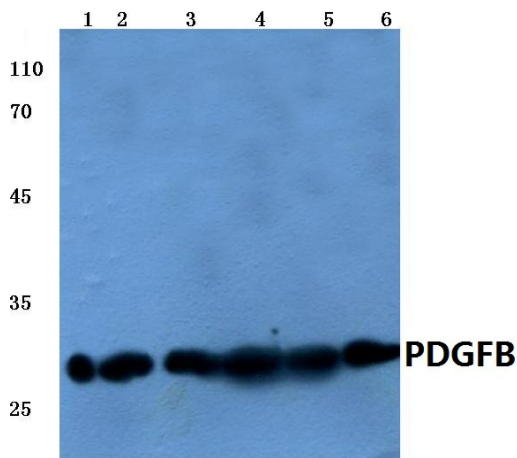
[View online »](#)

**Background:**

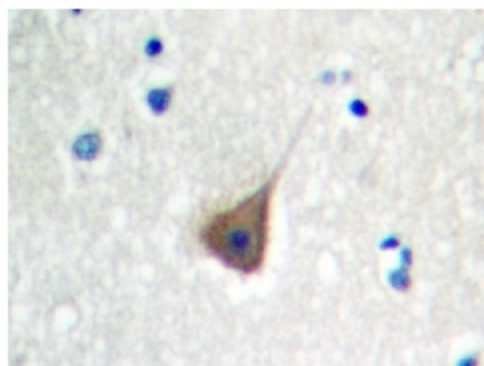
PDGF is a mitogen for mesenchyme- and glia-derived cells. It consists of two disulfide-bonded polypeptide chains, A and B, and occurs as three isoforms, PDGF AA, PDGF AB and PDGF BB. The three isoforms bind with different affinities to two receptor types,  $\alpha$  and  $\beta$ , which are structurally related and endowed with protein-tyrosine kinase domains. Ligand binding induces activation of the receptor kinases by formation of receptor dimers; the A subunit of PDGF binds only to  $\alpha$  receptors with high affinity, whereas the B subunit can bind to both  $\alpha$  and  $\beta$  receptors. Evidence suggests that PDGF may function as a neurotrophic factor. The fact that receptors for PDGF-A are expressed in oligodendrocyte progenitor cells whereas receptors for PDGF-B are expressed on neurons suggests that the different isoforms of PDGF may regulate growth and differentiation of different cell types in the developing central nervous system by paracrine and autocrine routes.

**Synonyms:**

Platelet-derived growth factor subunit B, PDGF beta, PDGF B, PDGF-B, Platelet-derived growth factor beta, PDGF subunit B, Platelet-derived growth factor B chain, PDGF2, PDGF-2, c-Sis, SIS, Becaplermin

**Product images:**


Western blot (WB) analysis of PDGFB antibody at 1/500 dilution Lane 1:HEK293T whole cell lysate Lane 2:Hela whole cell lysate Lane 3:Mouse liver tissue lysate Lane 4:Rat liver tissue lysate Lane 5:Mouse kidney tissue lysate Lane 6:Rat kidney tissue lysate



Immunohistochemistry (IHC) analysis of PDGFB antibody in paraffin-embedded human brain tissue.