

Product datasheet for **AP06281PU-M**

PCNA Rabbit Polyclonal Antibody

Product data:

Product Type:	Primary Antibodies
Applications:	IHC, WB
Recommended Dilution:	Western blot: 1/500-1/1000. Immunohistochemistry on paraffin sections: 1/50-1/200.
Reactivity:	Human, Mouse, Rat
Host:	Rabbit
Clonality:	Polyclonal
Immunogen:	Synthetic peptide, corresponding to amino acids 51-100 of Human PCNA.
Specificity:	This antibody detects endogenous levels of PCNA protein. (region surrounding Ile88)
Formulation:	Phosphate buffered saline (PBS), pH 7.2. State: Aff - Purified State: Liquid purified Ig fraction Preservative: 0.05% sodium azide
Concentration:	1.0 mg/ml
Purification:	Affinity-chromatography using epitope-specific immunogen and the purity is > 95% (by SDS-PAGE)
Conjugation:	Unconjugated
Storage:	Store undiluted at 2-8°C for one month or (in aliquots) at -20°C for longer. Avoid repeated freezing and thawing.
Stability:	Shelf life: one year from despatch.
Predicted Protein Size:	~ 29, 36 kDa
Gene Name:	proliferating cell nuclear antigen
Database Link:	Entrez Gene 5111 Human P12004



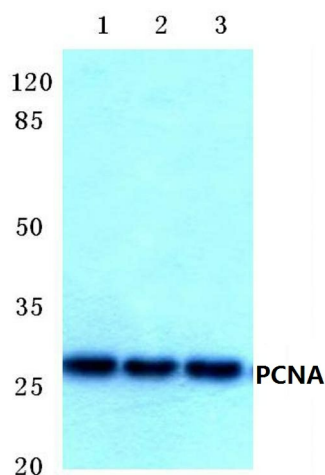
[View online »](#)

Background:

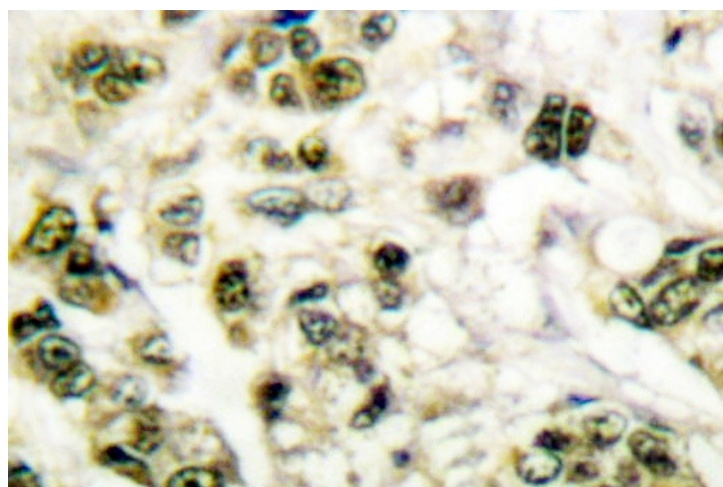
The proliferating cell nuclear antigen (PCNA), a protein synthesized in early G1 and S phases of the cell cycle, functions in cell cycle progression, DNA replication, and DNA repair. In early S phase, PCNA exhibits granular distribution and is absent from the nucleoli, however, in late S phase, it relocates to the nucleoli. PCNA exists in two basic forms, one involved in ongoing DNA replication, which localizes specifically to the nucleus, and a second, soluble form, not implicated in constant synthesis. Interestingly, the latter form degrades in the presence of organic solvents, rendering it undetectable by histological methods in tissues using organic fixatives, and thus also providing a method of visualizing only the synthesizing form.

Synonyms:

Cyclin

Product images:


Western blot (WB) analysis of PCNA antibody at 1/500 dilution Lane 1:HEK293T whole cell lysate Lane 2:SP2/0 whole cell lysate Lane 3:Rat brain tissue lysate



Immunohistochemistry (IHC) analyzes of PCNA antibody in paraffin-embedded human breast carcinoma tissue.