

## Product datasheet for **AP06278PU-M**

### PTCH1 Rabbit Polyclonal Antibody

#### Product data:

Product Type:	Primary Antibodies
Applications:	IHC, WB
Recommended Dilution:	<b>Western blot:</b> 1/500-1/1000. <b>Immunohistochemistry on Paraffin Sections:</b> 1/50-1/200.
Reactivity:	Human, Mouse, Rat
Host:	Rabbit
Clonality:	Polyclonal
Immunogen:	Synthetic peptide, corresponding to the N-terminal of Human Patched.
Specificity:	This antibody detects endogenous levels of Patched protein. (region surrounding Ala2)
Formulation:	Phosphate buffered saline (PBS), pH~7.2 State: Aff - Purified State: Liquid purified Ig fraction (> 95% pure by SDS-PAGE) Preservative: 0.05% Sodium Azide
Concentration:	1.0 mg/ml
Purification:	Affinity Chromatography using epitope-specific immunogen
Conjugation:	Unconjugated
Storage:	Store undiluted at 2-8°C for one month or (in aliquots) at -20°C for longer. Avoid repeated freezing and thawing.
Stability:	Shelf life: one year from despatch.
Predicted Protein Size:	~160 kDa
Gene Name:	patched 1
Database Link:	<a href="#">Entrez Gene 5727 Human Q13635</a>



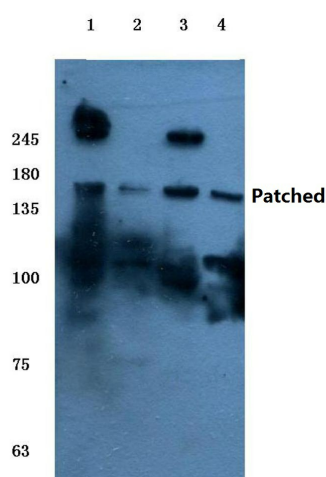
[View online »](#)

**Background:**

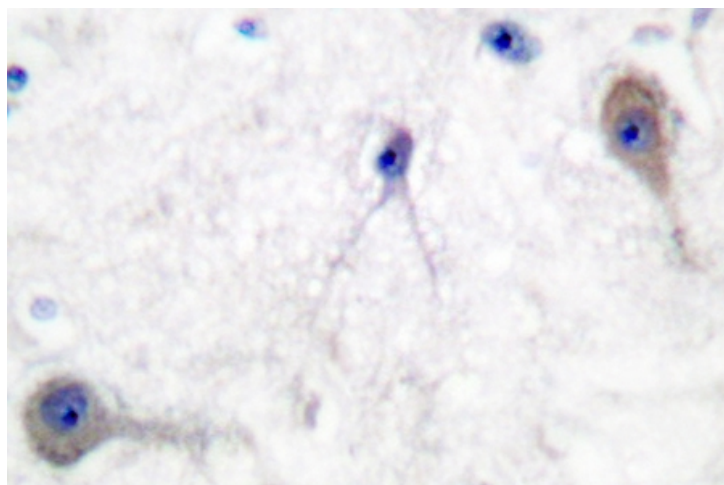
PTCH (Patched protein homolog 1) is a receptor for sonic hedgehog (SHH), indian hedgehog (IHH) and desert hedgehog (DHH). PTCH associates with the smoothened protein (SMO) to transduce the hedgehog's proteins signal. PTCH has a tumor suppressor function, as inactivation of this protein is probably a necessary, if not sufficient step for tumorigenesis. PTCH is expressed in the adult brain, lung, liver, heart, placenta, skeletal muscle, pancreas and kidney. It is also expressed in tumor cells but not in normal skin. During development PTCH is found in all major target tissues of sonic hedgehog, such as the ventral neural tube, somites, and tissues surrounding the zone of polarizing activity of the limb bud. Defects in PTCH are probably the cause of basal cell nevus syndrome also known as Gorlin syndrome or Gorlin-Goltz syndrome

**Synonyms:**

PTCH, PTC1, PTC, Patched 1

**Product images:**


Western blot (WB) analysis of Patched antibody at 1/500 dilution Lane 1:Hela whole cell lysate Lane 2:NIH-3T3 whole cell lysate Lane 3:PC12 whole cell lysate Lane 4:MCF-7 whole cell lysate



Immunohistochemistry (IHC) analysis of Patched antibody in paraffin-embedded human brain tissue.