

Product datasheet for **AP06277PU-N**

CCNL1 Rabbit Polyclonal Antibody

Product data:

Product Type:	Primary Antibodies
Applications:	IHC, WB
Recommended Dilution:	Western blot: 1/500-1/1000. Immunocytochemistry on Paraffin Sections: 1/50-1/200.
Reactivity:	Human, Mouse, Rat
Host:	Rabbit
Clonality:	Polyclonal
Immunogen:	Synthetic peptide, corresponding to amino acids 460-518 of Human Cyclin L1.
Specificity:	This antibody detects endogenous levels of Cyclin-L1 protein. (region surrounding Glu491)
Formulation:	Phosphate buffered saline (PBS), pH~7.2 State: Aff - Purified State: Liquid purified Ig fraction (> 95% pure by SDS-PAGE) Preservative: 0.05% Sodium Azide
Concentration:	1.0 mg/ml
Purification:	Affinity Chromatography using epitope-specific immunogen
Conjugation:	Unconjugated
Storage:	Store undiluted at 2-8°C for one month or (in aliquots) at -20°C for longer. Avoid repeated freezing and thawing.
Stability:	Shelf life: one year from despatch.
Predicted Protein Size:	~60 kDa
Gene Name:	cyclin L1
Database Link:	Entrez Gene 57018 Human Q9UK58

[View online »](#)

Background:

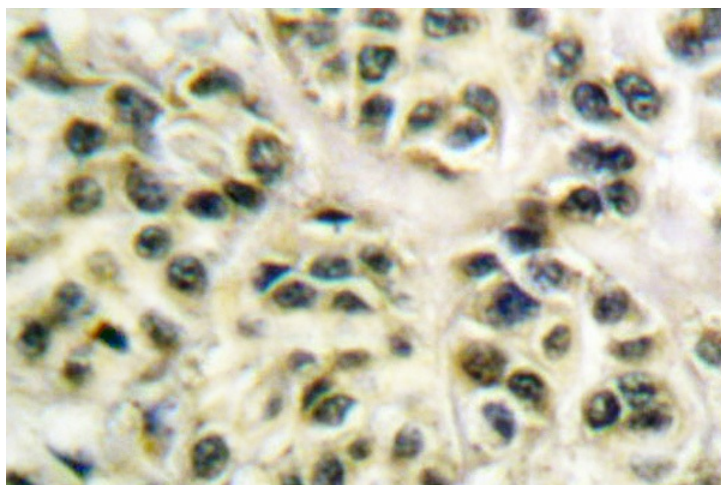
Cell proliferation is controlled at specific stages of the cell cycle by distinct protein kinase complexes. These complexes consist of a catalytic subunit associating with a specific regulatory subunit to form the active kinase. The cyclins, which include cyclin A, B, C, D, E, F, G, H, I, K, L, T and their related proteins, including Dbf4, comprise the regulatory subunits of these kinase complexes. The controlled activation of the kinase complexes at various intervals of the cell cycle is regulated by the availability of the cyclins to the catalytic subunit. Unlike the catalytic subunit, which is expressed continually, the expression and stability of the regulatory subunit fluctuates depending on the stage of the cell cycle and, thereby, regulates the kinase activity. Cyclin L1 is a ubiquitously expressed nuclear protein that can be detected in higher levels in thymus. In neck and head squamous cell carcinomas, cyclin L1 can be overexpressed and is therefore often considered a proto-oncogene. It interacts with POLR2A, CDC2L and SFRS2. Cyclin L1 plays a role in the mRNA splicing process regulation.

Synonyms:

Cyclin-L1, Cyclin-L, CCNL1, BM-001

Product images:


Western blot (WB) analysis of Cyclin-L1 antibody in extracts from HepG2 cells.



Immunohistochemistry (IHC) analyzes of Cyclin-L1 antibody in paraffin-embedded human breast carcinoma lung carcinoma tissue.