

Product datasheet for **AP06274PU-M**

p95 NBS1 (NBN) Rabbit Polyclonal Antibody

Product data:

Product Type:	Primary Antibodies
Applications:	IHC, WB
Recommended Dilution:	Western blot: 1/500-1/1000. Immunohistochemistry on Paraffin Sections: 1/50-1/200.
Reactivity:	Human, Mouse
Host:	Rabbit
Clonality:	Polyclonal
Immunogen:	Synthetic peptide, corresponding to amino acids 311-360 of Human Nibrin.
Specificity:	This antibody detects endogenous levels of p95/NBS1 protein. (region surrounding Thr337)
Formulation:	Phosphate buffered saline (PBS), pH~7.2 State: Aff - Purified State: Liquid purified Ig fraction (> 95% pure by SDS-PAGE) Preservative: 0.05% Sodium Azide
Concentration:	1.0 mg/ml
Purification:	Affinity Chromatography using epitope-specific immunogen
Conjugation:	Unconjugated
Storage:	Store undiluted at 2-8°C for one month or (in aliquots) at -20°C for longer. Avoid repeated freezing and thawing.
Stability:	Shelf life: one year from despatch.
Predicted Protein Size:	~95 kDa
Gene Name:	nibrin
Database Link:	Entrez Gene 4683 Human O60934



[View online »](#)

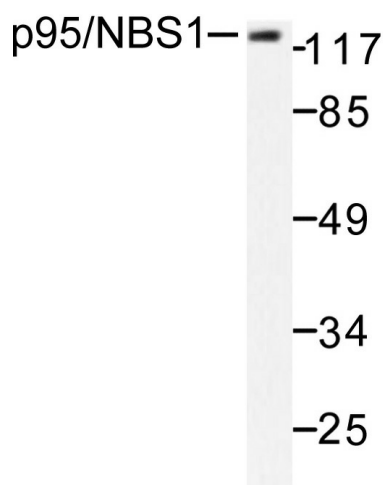
Background:

DNA repair proteins are necessary for the maintenance of chromosome integrity and are involved in the elimination of premutagenic lesions from DNA. The DNA repair proteins Rad51 and Rad52 are key components of the double-strand-break repair (DSBR) pathway. Rad51 is essential for mitotic and meiotic recombination, and its mutation in yeast and mammalian cells results in chromosome loss. Overexpression of Rad52 confers resistance to ionizing radiation and induces homologous intrachromosomal recombination. Rad52 is thought to be involved in an early stage of Rad51-mediated recombination. Additional proteins involved in the pathway include Dmc1 and nibrin. Dmc1 is specifically involved in meiotic recombination. Nibrin, which complexes with Mre11 and Rad50, is absent in Nijmegen breakage syndrome (NBS) patients.

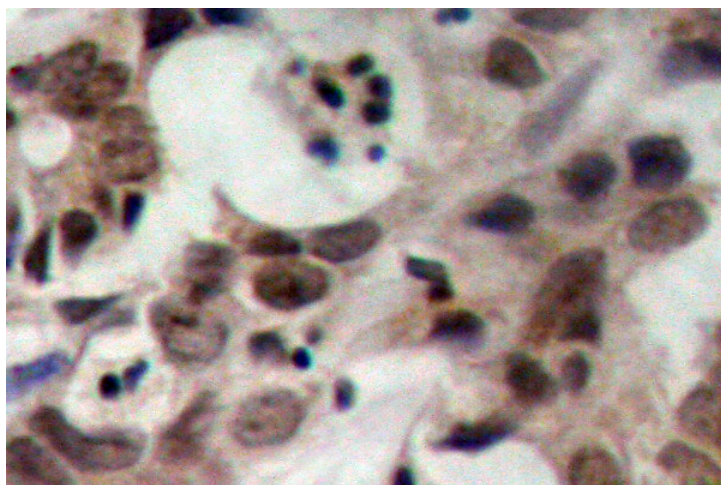
Synonyms:

NBN, NBS, NBS1, P95

Product images:



Western blot (WB) analysis of p95/NBS1 antibody in extracts from 293 cells.



Immunohistochemistry (IHC) analyzes of Nibrin antibody on paraffin-embedded sections.