

## Product datasheet for **AP06263PU-M**

### p21 (CDKN1A) Rabbit Polyclonal Antibody

#### Product data:

Product Type:	Primary Antibodies
Applications:	ELISA, IHC, WB
Recommended Dilution:	<b>Western blot:</b> 1/500-1/1000. <b>Immunohistochemistry on paraffin sections.</b>
Reactivity:	Human, Mouse, Rat
Host:	Rabbit
Clonality:	Polyclonal
Immunogen:	Synthetic peptide, corresponding to amino acids 100-150 of Human P21.
Specificity:	This antibody detects endogenous levels of p21 Cip1 protein. (region surrounding Gly139)
Formulation:	Phosphate buffered saline (PBS), pH~7.2 State: Aff - Purified State: Liquid purified Ig fraction (> 95% pure by SDS-PAGE). Preservative: 0.05% Sodium Azide
Concentration:	1.0 mg/ml
Purification:	Affinity Chromatography using epitope-specific immunogen.
Conjugation:	Unconjugated
Storage:	Store undiluted at 2-8°C for one month or (in aliquots) at -20°C for longer. Avoid repeated freezing and thawing.
Stability:	Shelf life: one year from despatch.
Predicted Protein Size:	~21.0 kDa
Gene Name:	cyclin-dependent kinase inhibitor 1A
Database Link:	<a href="#">Entrez Gene 1026 Human P38936</a>



[View online »](#)

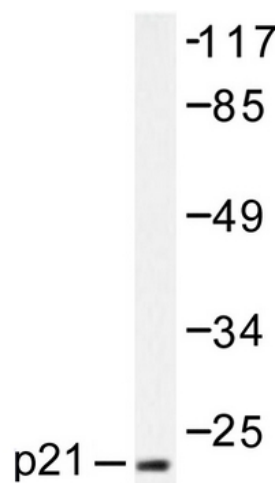
**Background:**

It is now well established that cyclins play a positive role in promoting cell cycle transitions via their ability to associate with and activate their cognate cyclin-dependent kinases (Cdks). Cdk2 associates with cyclins A, D and E, and has been implicated in the control of the G1 to S phase transition in mammals. A novel Cdk-interacting protein, designated p21, Cip1 or WAF1, has been identified in cyclin A, cyclin D1, cyclin E and Cdk2 immunoprecipitates. p21 is a potent, tight-binding inhibitor of Cdks and can inhibit the phosphorylation of Rb by cyclin A-Cdk 2, cyclin E-Cdk2, cyclin D1-Cdk4 and cyclin D2-Cdk4 complexes. Expression of p21 is inducible by wildtype, but not mutant, p53. The mouse homolog of p21 is designated CAP20.

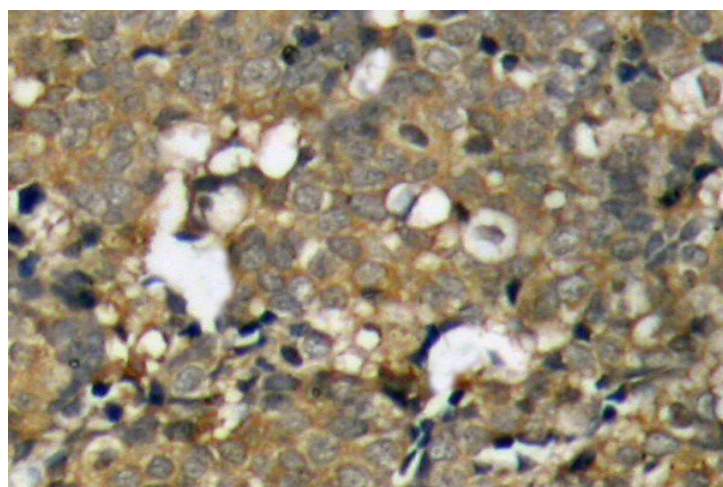
**Synonyms:**

CAP20, CDKN1, CIP1, MDA6, MDA-6, PIC1, SDI1, WAF1

**Product images:**



Western blot (WB) analysis of p21 Cip1 Antibody in extracts from Hela cell treated with EGF 200ng/ml 30'



Immunohistochemistry (IHC) analyzes with p21 Cip1 antibody on paraffin-embedded sections